

**RANDOLPH C. LAFFERTY**  
Certified by the N.J. Supreme Court as a Civil Trial Attorney  
EMAIL: [rlafferty@cooperlevenson.com](mailto:rlafferty@cooperlevenson.com)

October 2, 2017

*Via Email: [George.Cohen@dol.lps.state.nj.us](mailto:George.Cohen@dol.lps.state.nj.us)*

George C. Cohen, Deputy Attorney General  
Richard J. Hughes Justice Complex (HJC)  
8th Floor, West Wing  
25 Market Street  
Trenton, NJ 08625-0080

Re: November 2017 General Election

Dear Mr. Cohen:

As you are aware, I represent the interests of the Atlantic County Republican Committee. I write to you regarding what we view as a significant issue related to the pending election for November.

A registered voter of the City of Atlantic City presented themselves recently to the Office of the Atlantic County Clerk in order to procure a vote-by-mail ballot for the upcoming General Election. The voter was given the attached ballot. As you can see therefrom, the ballot he was given already had votes cast for Philip Murphy for Governor; Frank Gilliam for Mayor; and George Tibbitt for Council. The ballot was “pre-loaded” with these selections and obviously had been tampered with.

The individual then formally complained to the Clerk’s Office regarding this tampered ballot. After some internal consultation, the voter was given a clean ballot upon which to cast his vote. It was never explained to him how the initial pre-marked ballot came to be or who was responsible for tampering with this ballot.

The Atlantic County Republican Committee remains committed to its goal of ensuring the integrity of the electoral process here in Atlantic County so that the citizens are afforded the opportunity to express their individual choice as to candidates for public office. This obvious tampering with the vote-by-mail ballots seriously calls into question the practices within the Office of the Atlantic County Clerk and/or their ability to maintain the integrity of these ballots.

We are respectfully requesting that the Office of the Attorney General immediately commence an investigation of the ballot tampering that is apparently taking place within the Office of the Atlantic



George C. Cohen, Deputy Attorney General

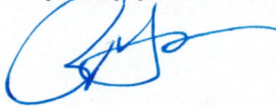
October 2, 2017

Page 2

County Clerk and that the Attorney General further immediately undertake the direct supervision of the activities being conducted within the Clerk's Office. It is only through the direct and impartial monitoring by the Attorney General that we can ensure the integrity of the electoral process here in Atlantic County.

I will await your kind advices regarding the above request and appreciate your anticipated prompt attention to this matter.

Very truly yours,

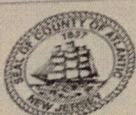


Randolph C. Lafferty

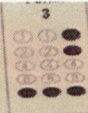
RCL/sjh – enc.

cc: Edward P. McGettigan, Atlantic County Clerk – *Via Facsimile: 343-2167*  
Atlantic County Board of Elections – *Via Facsimile: 645-5875*  
James Ferguson, County Counsel – *Via Email*  
Keith A. Davis, Chairman – *Via Email*  
Robert D. Herman, Esquire – *Via Email*  
w/enc.





OFFICIAL GENERAL ELECTION MAIL BALLOT  
 ELECCIONES GENERALES OFICIALES BOLETA DE VOTO POR CORREO  
**Atlantic City**  
 Atlantic County, New Jersey  
 2nd Legislative District - November 7, 2017



**EDWARD P. McGETTIGAN**

Atlantic County Clerk  
 Secretario del Condado de Atlantic

**To Protect Your Voter:**

IT IS AGAINST THE LAW FOR ANYONE EXCEPT YOU TO MARK OR INSPECT THIS BALLOT. However, a family member may assist you in doing so if you are an incapacitated voter, a person other than a family member may also assist you in doing so.

**Para proteger su voto:**

ES LEGAL QUE OTRA PERSONA EXCEPTO USTED, EL ELECTOR MARQUE O INSPECCIONE ESTA BOLETA. Sin embargo, un familiar puede ayudarle a hacerlo. Si usted es un elector incapacitado, una persona que no es un familiar también puede ayudarle a hacerlo.

**IMPORTANT INSTRUCTIONS TO VOTERS**

Please read the following before marking your ballot.

1. Use ONLY a pencil or ink pen (black or blue) to mark your ballot. Do not use red ink.
2. Completely fill in the oval to the right of each of your selections.

MARK BALLOT LIKE THIS.

JOHN DOE → ●

3. To vote for any person whose name is not printed on this ballot fill in the oval by the words "Write-In Vote" under that office. Write the name of the person for which you wish to vote on the blank line. You may not write-in any name that is printed on the ballot.

4. To vote on a Public Question, fill in the oval to the right of the word "YES" or "NO" (from this ○, to this ●).

5. If you tear, deface or incorrectly mark this ballot, return it to the Atlantic County Clerk's Election Office and obtain a new ballot.

**INSTRUCCIONES IMPORTANTES A LOS ELECTORES**

Por favor leer lo siguiente antes de marcar la boleta:

1. Use solamente un lápiz o una pluma (de tinta negra o azul) para marcar la boleta. No use tinta roja.

2. Llène completamente el óvalo a la derecha de cada selección.

MARQUE LA BOLETA ASÍ.

JOHN DOE → ●

3. Para votar por cualquier persona cuyo nombre no está impreso en la boleta, llene el óvalo por las palabras "Write-In-Vote" (Votar por escrito) debajo del título del cargo. Escriba el nombre de la persona por quien usted desea votar en la línea en blanco. No se puede escribir ningún nombre impreso en la boleta.

4. Para votar por una Pregunta Pública, llene el óvalo a la derecha de la palabra "SI" o "NO" (de este ○, a este ●).

5. Si rompe, pintarrajea o marca incorrectamente esta boleta, devuélvala a la Oficina Electoral de la Secretaria del Condado de Atlantic para obtener una nueva boleta.

**Governor & Lieutenant Governor**  
 (Vote for one slate)  
**Gobernador y Vicegobernador**  
 (Vote por una lista)

PHILIP MURPHY → ●  
 SHEILA OLIVER  
DEMOCRATIC

KIM GUADAGNO → ○  
 CARLOS A. RENDO  
REPUBLICAN

GINA GENOVESE → ○  
 REDUCE PROPERTY TAXES

SETH KAPER-DALE → ○  
 LISA DURDEN  
GREEN PARTY

MATTHEW RICCARDI → ○  
CONSTITUTION PARTY

PETER J. ROHRMAN → ○  
 KARESE J. LAGUERRE  
LIBERTARIAN PARTY

VINCENT ROSS → ○  
 APRIL A. JOHNSON  
WE THE PEOPLE

WRITE-IN VOTE → ○

**State Senate**  
 (Vote for one)  
**Senado Estatal**  
 (Vote por uno)

COLIN BELL → ○  
DEMOCRATIC

CHRIS BROWN → ○  
REPUBLICAN

WRITE-IN VOTE → ○

**Members of General Assembly**  
 (Vote for two)

**Miembros de la Asamblea General**  
 (Vote por dos)

VINCE MAZZEO → ○  
DEMOCRATIC

JOHN ARMATO → ○  
DEMOCRATIC

VINCE SERA → ○  
REPUBLICAN

BRENDA TAUBE → ○  
REPUBLICAN

HEATHER GORDON → ○  
INDEPENDENT, HONEST, RELIABLE

MICO LUCIDE → ○  
GREEN PARTY

WRITE-IN VOTE → ○

WRITE-IN VOTE → ○

**Sheriff**  
 (Vote for one)

**Alguacil**  
 (Vote por uno)

ERIC SCHEFFLER → ○  
DEMOCRATIC

JACK GLASSER → ○  
REPUBLICAN

**Freeholder-at-Large**  
 (Vote for two)  
**Freeholder para Toda el Condado**  
 (Vote por dos)

CAREN FITZPATRICK → ○  
DEMOCRATIC

THELMA WITHERSPOON → ○  
DEMOCRATIC

JOHN W. RISLEY, JR. → ○  
REPUBLICAN

TONY DIPIETRO → ○  
REPUBLICAN

MELISSA TOMLINSON → ○  
GREEN PARTY

WRITE-IN VOTE → ○

WRITE-IN VOTE → ○

**Mayor**  
 (Vote for one)

**Alcalde**  
 (Vote por uno)

FRANK M. GILLIAM, JR. → ○  
DEMOCRATIC

DONALD A. GUARDIAN → ○  
REPUBLICAN

JOSEPH J. POLILLO → ○  
POLICE'S LAST STAND

HENRY A. GREEN → ○  
GREEN PARTY

WRITE-IN VOTE → ○

**Council-at-Large**  
 (Vote for three)

**Consejal en General**  
 (Vote por tres)

GEORGE TIBBITT → ○  
DEMOCRATIC

MOISSE DELGADO → ○  
DEMOCRATIC

JEFFREE FAUNTLEROY II → ○  
DEMOCRATIC

STACEY KAMMERMAN → ○  
REPUBLICAN

RONALD V. BAILEY → ○  
REPUBLICAN

PAUL TONACCI → ○  
REPUBLICAN

TOM FORKIN → ○  
SERVICE ABOVE SELF

WRITE-IN VOTE → ○

WRITE-IN VOTE → ○

WRITE-IN VOTE → ○

WRITE-IN VOTE → ○

WRITE-IN VOTE → ○

**IMPORTANT BOTH SIDES**  
**INSTRUCCIONES IMPORTANTES A LOS ELECTORES**