

The Powerful
WOMEN
of New Jersey

SENATOR WEINBERG'S 2018 WOMEN POWER LIST



MAKE OUR STATE A BETTER PLACE!



A Message From Senate Majority Leader Loretta Weinberg

Many of the powerful women of New Jersey are well known. Others are not. They are the cabinet members who run the large and complex bureaucracies that make up our state government. They are the union leaders who advocate for our workers. They are behind-the-scenes schedulers, office managers, and Chiefs of Staff for some of New Jersey's leaders. They are the lobbyists and influencers who articulate the many policies of New Jersey's businesses and non-profits. They are business leaders, healthcare leaders, fundraisers, and political leaders.

But most important, they are advocates for all of us. As this list grows each year, let's all celebrate their influence and their increasing stature. The "powerful women" of New Jersey make our state a better place.

Loretta Weinberg

Loretta Weinberg

Senate Majority Leader

*"Here's to all the grass roots women who led, organized, pushed to achieve the sea change we saw in our state in this election. From South Jersey Progressive Women north to the TeaneckWomen Together; to all the Indivisibles and the various #s For Change to the High School students who organized, here's a great big **THANK YOU** for giving us a more hopeful future."*

THE POWERFUL WOMEN OF NEW JERSEY



ADELE H. LATOURETTE
Director,
HUNGER FREE NJ



ALISON ACCETTOLA
NJ Senate Democratic
Office



ALLISON KOPICKI
NJ Economic Development
Authority



ALYANA ALFARO POST
Office of the Governor



AMY DEGISE
Chairwoman, Hudson
County Democratic
Organization



AMY MANSUE
RWJBarnabas Health,
President of Southern
Region

THE POWERFUL WOMEN OF NEW JERSEY



ANALILIA MEJIA
NJ Executive Director,
Working Families Party



ANDREA KATZ
Chief of Staff,
Commissioner,
NJ Human Services



ANGELA DELLI SANTI
NJ Department of Labor



ANN TWOMEY
President, HPAE (retired)



ANNA MARTINEZ
State Director, NJ Division
on Women



ANNETTE CATINO
Northfield Bancorp

THE POWERFUL WOMEN OF NEW JERSEY



ARLENE QUINONES PEREZ
DeCotiis, FitzPatrick and
Cole/Hunterdon County
Democratic Committee,
Chairwoman



AUDREY MEYERS
The Valley Health System,
President & CEO



BABS SIPERSTEIN
LGBTQ Activist/Middlesex
County Committee



BARBARA DEMARCO
Porzio Government
Affairs



**BARBARA GEORGE
JOHNSON**
Thomas Edison State
University, Executive
Director



BARBARA GITENSTEIN
Association of Governing
Boards of Universities and
Colleges

THE POWERFUL WOMEN OF NEW JERSEY



BARBARA ROSEN
1st Vice President, HPAE



BERNADETTE MCPHERSON
Millenium Strategies



BETH DOHM
Kaufman Zita Group



BIANCA JEREZ
Senate Democratic
Majority Campaign

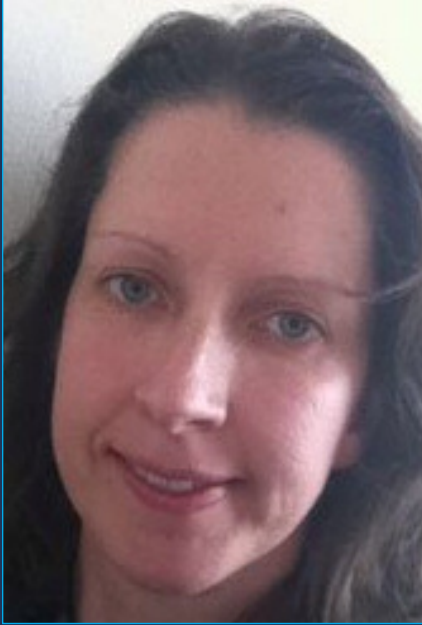


BRENDA FLANAGAN
NJTV



BRIANNA VANNOZZI
NJTV

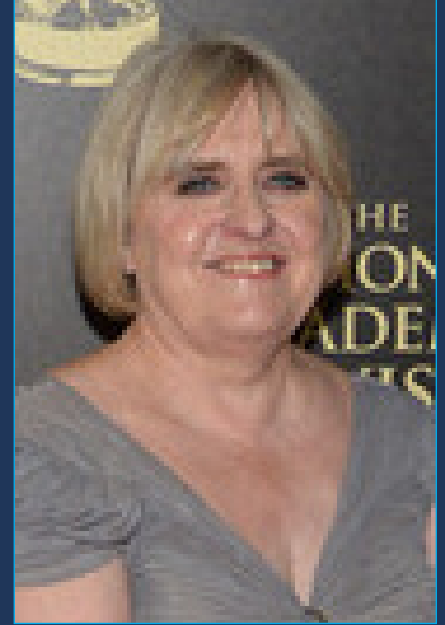
THE POWERFUL WOMEN OF NEW JERSEY



BRIDGET DEVANE
Public Policy Director,
HPAE



BRIGID HARRISON
Montclair State University



CANDY STRAIGHT
Republican
Fundraiser/Producer
of Film "Equity"



CARMEN BENITEZ
Office of Senate President
Steve Sweeney



CAROL KATZ
Katz Government Affairs,
Founder



CAROLE JOHNSON
Commissioner, NJ
Department of Human
Services

THE POWERFUL WOMEN OF NEW JERSEY



CATHERINE MCCABE
Commissioner,
NJ Department of
Environmental Protection



CATHERINE YAXLEY
Vice President, Holy Name
Medical Center



CATHLEEN D. BENNETT
NJ Hospital Association,
President & CEO



CECILIA ZALKIND
Advocates for Children of
NJ, President & CEO



CHRISSEY BUTEAS
Gov't Relations, NJBIA



CHRISTINA ZUK
Princeton Public Affairs
Group

THE POWERFUL WOMEN OF NEW JERSEY



CHRISTINE NORBUT BEYER
Commissioner,
NJ Department of Children
and Families



CHRISTINE SADOVY
Board of Public Utilities



CHRISTINE SHIPLEY
NJ Senate Republican
Office, Executive Director



CHRISTINE STEARNS
Gibbons P.C.



CLAUDINE LEONE
Government Affairs
Consulting, Principal



DANA M. BURLEY
Clerk of the General
Assembly

THE POWERFUL WOMEN OF NEW JERSEY



DANIELLE ALPERT
River Crossing Strategy
Group



DEBBIE FRANCIKA
Chief of Staff, Office of
the Senate Majority Leader
Loretta Weinberg



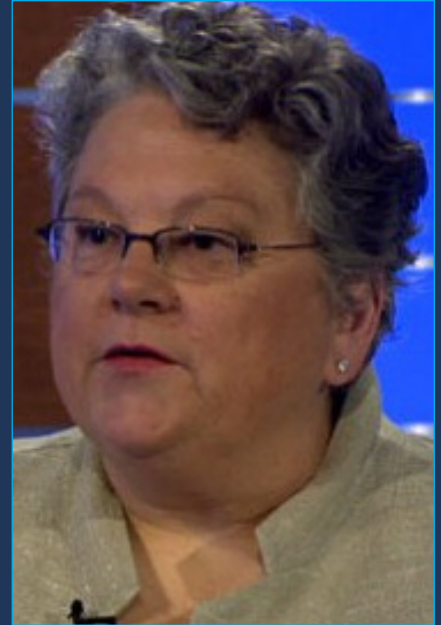
DEBBIE WALSH
Center for American
Women and Politics,
Director



DEBBIE WHITE
President, HPAE



DEBORAH BOZARTH
New Jersey Association
for Justice



DEBORAH HOWLETT
University of Delaware

THE POWERFUL WOMEN OF NEW JERSEY



DENA MOTTOLA JABORSKA
NJ Citizen Action



DIANE DU BRULE
Director of Development,
ACLU-NJ



DIANE GUTIERREZ-SCACCETTI
Commissioner, NJ
Department of
Transportation



DR. LAUREN PECCORALO
Leonia Action Alliance



DR. SUSAN COLE
Montclair State University,
President



ELAINE ADLER
Adler Aphasia Center

THE POWERFUL WOMEN OF NEW JERSEY



ELISE YOUNG
Bloomberg



ELIZABETH MAHER MUOIO
NJ State Treasurer



ERICA DAUGHTREY
Office of Congressman
Albio Sires



EVELYN LIEBMAN
AARP NJ



GAIL GORDON
GOP Fundraiser



GINGER GOLD
NJEA

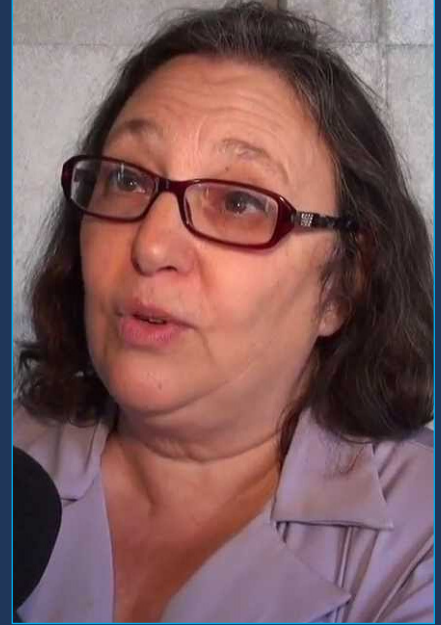
THE POWERFUL WOMEN OF NEW JERSEY



GRACE STROM POWER
Board of Public Utilities



HANNA MORI
Office of Senator
Cory Booker



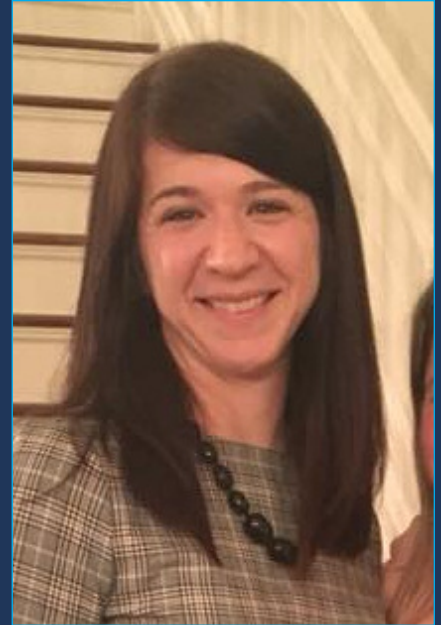
HETTY ROSENSTEIN
NJ Director, CWA



IDIDA RODRIGUEZ
1868 Public Affairs



JACKIE CORNELL
NJ Department of Health



JANICE FULLER
Office of Congressman
Frank Pallone

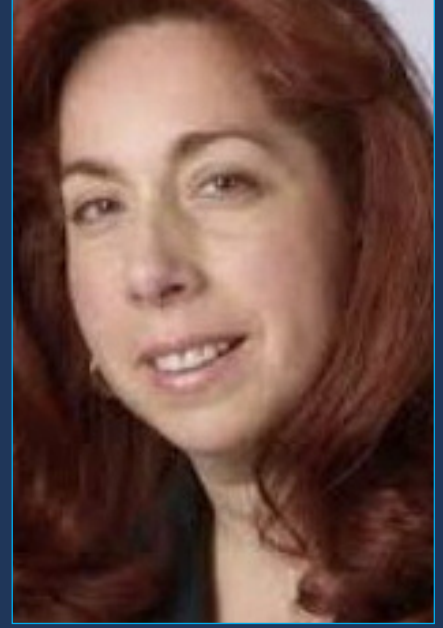
THE POWERFUL WOMEN OF NEW JERSEY



JANNA CHERNETZ
Tri-State Transportation
Campaign



JEAN PIERCE
Public Policy Staff, HPAE



JEAN RIMBACH
The Bergen Record



JEANETTE HOFFMAN
Marathon Public Affairs,
President



JEANNINE LaRUE
Kaufman Zita Group
President



JENN SCIORTINO
NJ Department of
Treasury

THE POWERFUL WOMEN OF NEW JERSEY



JENNIFER M. COFFEY
Association of New Jersey
Environmental Commis-
sions, Executive Director



JENNIFER MANCUSO
Fair Share Hospitals
Collaborative, Executive
Director



JENNIFER TAYLOR
NJ Assembly Democratic
Office



JENNIFER VELEZ
RWJBarnabas Health



JENNY DAVIS
PANYNJ



JILL SHORTWAY IPPOLITO
Director of Appointments,
Governor's Office

THE POWERFUL WOMEN OF NEW JERSEY



JUDY DISTLER
Teaneck International Film
Festival, Co-Founder



JULIE DIAZ
Chief of Staff,
NJ Department of Labor



JULIE BUSBY
Philadelphia Inquirer



JULIE O'BRIEN
WEDO Bergen County



JULIE ROGINSKY
Democratic Strategist



KAREN KOMINSKY
CLB Partners

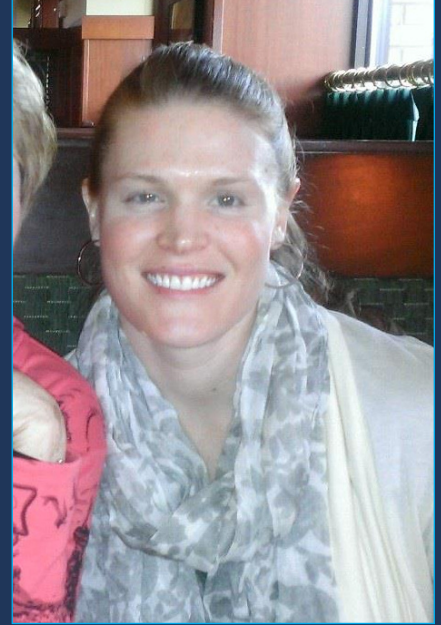
THE POWERFUL WOMEN OF NEW JERSEY



KARIN ELKIS
Optimus Partners



KATE KING
Wall Street Journal



KATE MCDONNELL
Deputy Chief Counsel,
Governor's Office



KATE ZERNIKE
The New York Times



KATHERINE LANDERGAN
Politico



KATIE BRENNAN
Activist

THE POWERFUL WOMEN OF NEW JERSEY



KATIE JENNINGS
Politico



KATIE WERTHEIMER
Planned Parenthood



KAY LICAUSI
Hoboken Strategy Group,
President & CEO



KELLY MOOIJ
NJ Audubon Society



KELLY STEWART MAER
Capital Health Systems



KELLYANNE CONWAY
Adviser to President Trump

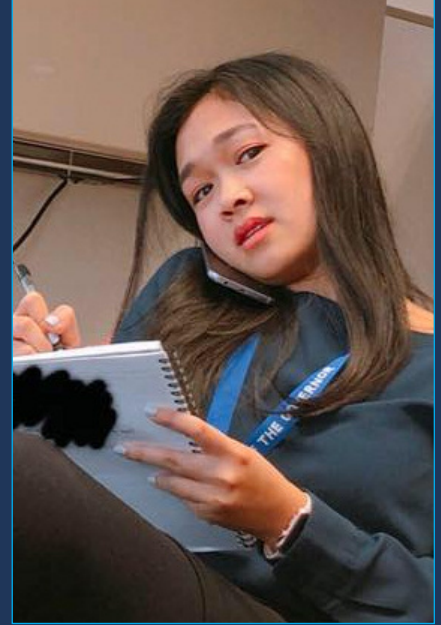
THE POWERFUL WOMEN OF NEW JERSEY



LARA RODRIGUEZ
Bergen County Board of
Chosen Freeholders, Clerk



LAUREL BRENNAN
NJ State AFL-CIO,
Secretary, Treasurer



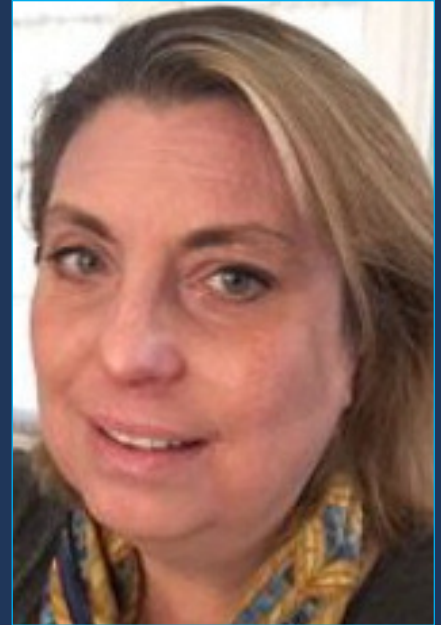
LAUREN LALICON
Office of the First Lady,
Tammy Murphy



LAURIE CLARK
New Jersey Association
of Osteopathic Physicians
and Surgeons



LAURIE MCCABE
Office of Senator Joe
Vitale and Assemblyman
Craig Couglin



LEE KEOUGH
NJ Spotlight

THE POWERFUL WOMEN OF NEW JERSEY



LESLIE HUHN
Sussex County Democratic
Committee, Chairwoman



LILO STANTON
NJ Spotlight



LINDA METZGER
Secretary of the NJ
Senate



LINDY WASHBURN
The Bergen Record



LINH TAT
Politico



LISA CHAPLAND
NJ State Bar Association

THE POWERFUL WOMEN OF NEW JERSEY



LISA MIZRAHI KAADO
Women's Political Caucus



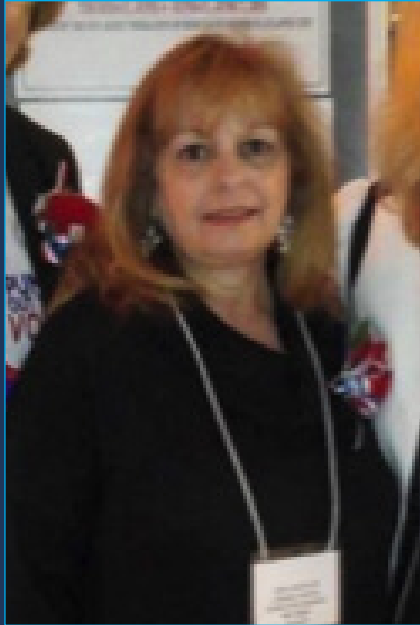
LISA TAKEUCHI-CULLEN
Leonia Action Alliance/
NBC TV Writer



LIZETTE DELGADO-POLANCO
Vice-Chair, NJ State Democratic
Committee, CEO, NJ Schools
Development Authority



LORI SACKLER
Bergen Indivisible,
Founder & President



LORRAINE JOEWONO
Bergen County Division
of Senior Services,
Director



LYNDA HINKLE
Law Offices of
Lynda L. Hinkle

THE POWERFUL WOMEN OF NEW JERSEY



LYNN HAINES
Deputy Chief of Staff,
Governor's office



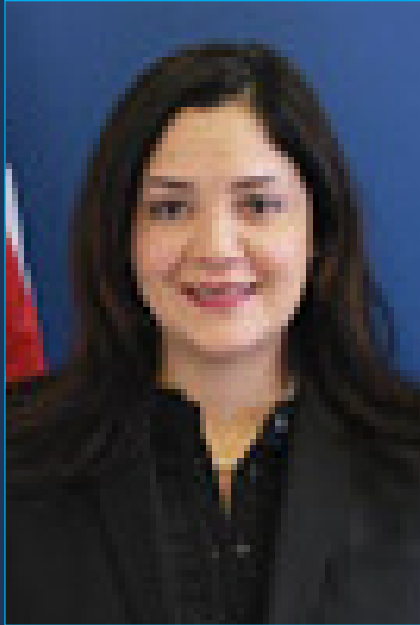
LYNN NOWAK
Porzio Government Affairs



LYNNE CHAIKEN
NJ Activist



MAGGIE MORAN
Kivvit, Managing Partner



MARCELA MAZIARZ
Deputy Commissioner,
NJ Department of Health



MARCIA MARLEY
Blue Wave NJ, President

THE POWERFUL WOMEN OF NEW JERSEY



MARILYN DAVIS
Altice



MARLENE CARIDE
Commissioner,
NJ Department of Banking
and Insurance



MARLENE KALAYILPARAMPIL
New Jersey Medical
Society



**MARSHA SHAPIRO AND
LOUISE WALPIN**
Marriage Equality
Activists/STAND Central
NJ



MARY JO LAYTON
Hackensack Meridian
Health



MARY KAY ROBERTS
Riker Danzig

THE POWERFUL WOMEN OF NEW JERSEY



MARY NOONAN
Chief of Staff, Office of
Congressman Chris Smith



MARY WACHTER
Genentech



MELANIE WILLOUGHBY
Executive Director, Nj
Business Action Center



MELISSA HAYES
NJ Transportation
Planning Authority



MELISSA HELMBRECHT
Give Something Back



MICHELE DIIORGI
Chief of Staff, Bergen
County Executive, James
Tedesco

THE POWERFUL WOMEN OF NEW JERSEY



MICHELE JAKER
MBI-GluckShaw



MICHELLE CORYELL
Office of Senate President
Steve Sweeney



MICHELLE DeANGELO
Scheduler,
Governor Murphy



MILLY SILVA
SEIU Local 1199



NANCY CANTOR
Rutgers University
Newark, Chancellor



NANCY ERIKA SMITH
Smith Mullin P.C./
represented Gretchen
Carlsen in Roger Ailes
sexual harrassment case

THE POWERFUL WOMEN OF NEW JERSEY



NICOLA BOCOUR
Giffords



PATRICIA DICOSTANZO
Bergen County
Superintendent of
Elections



PATRICIA TEFFENHEART
The NJ Coalition Against
Sexual Assault, Executive
Director



PATTI MCGUIRE
Princeton Public Affairs



PAULA MADISON
President, Bergen-Passaic
Chapter of the National
Coalition of 100 Black
Women

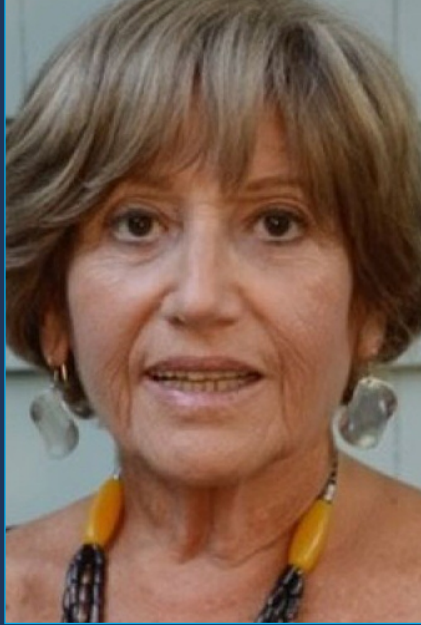


PEG SCHAFFER
Somerset County
Democratic Organization,
Chairwoman

THE POWERFUL WOMEN OF NEW JERSEY



PHOEBE HADDON
Rutgers University-Camden,
Chancellor



PHYLLIS SALOWE-KAYE
NJ Citizen Action,
Executive Director



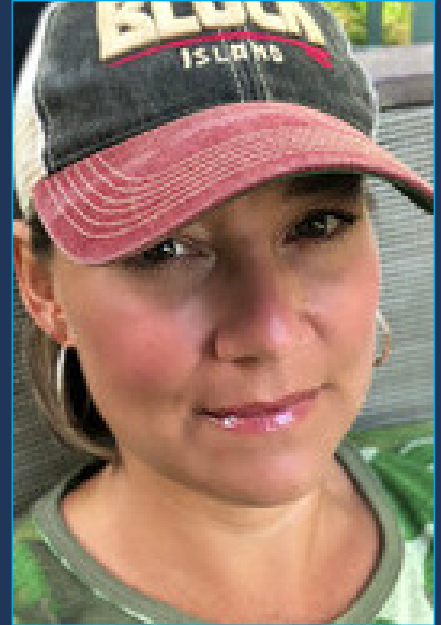
RASHEIDA SMITH
Dunton Consulting



RENEE TRABERT
Office of the Senate
Minority Leader Tom Kean



RHODA CHODOSH
Republican Operative



ROBIN MORANTE
NJ Judiciary,
Chief of Court and
Judicial Security

THE POWERFUL WOMEN OF NEW JERSEY



ROBIN WALTON
Thomas Edison State
University



ROSI EFTHIM
Blue Jersey



RUTH MANDEL
Eagleton Institute of
Politics, Director



SABEEN KALYAN-MASIH
Capital Impact Group



SAMANTHA MARCUS
NJ Advance Media



SARAH LECHNER
RWJBarnabas Health

THE POWERFUL WOMEN OF NEW JERSEY



SHANTÉ PALMER
Gov't Relations, Montclair
State University



SHARI WEINER
Murphy McKeon P.C.



SHARON ANNE HARRINGTON
NJ Casino Control
Commission, Vice-Chair



SHARON BALSAMO
NJ State Bar Association



SHEILA OLIVER
Commissioner, NJ
Department of Community
Affairs/Lt. Governor



SONIA DAS
AMG

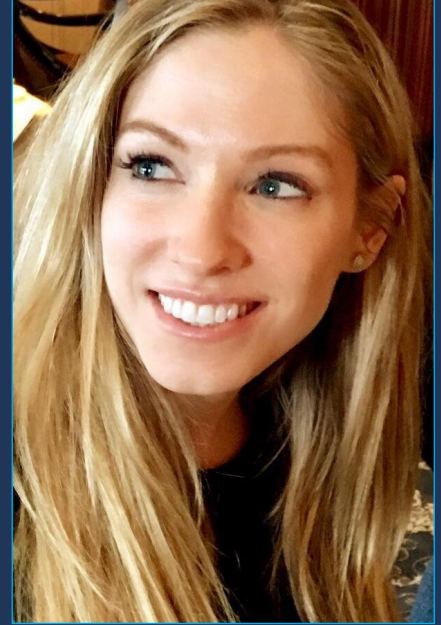
THE POWERFUL WOMEN OF NEW JERSEY



SONIA DELGADO
Princeton Public Affairs



STACY SCHUSTER
Campaign Manager,
Bob Hugin for Senate



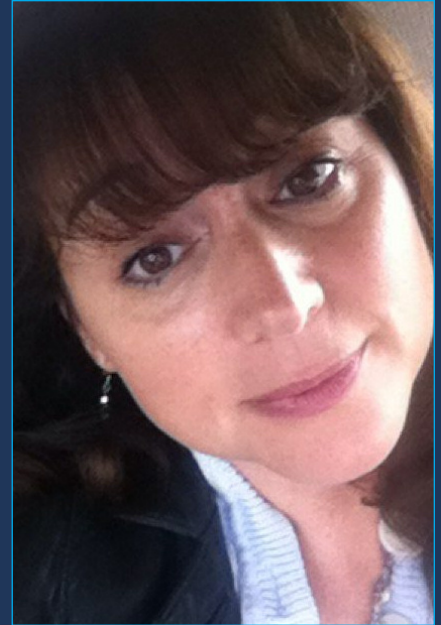
STEPHANIE LAGOS
Chief of Staff, First Lady,
Tammy Murphy



SUE FULTON
Commissioner, NJ Motor
Vehicle Commission



SUSAN BASS LEVIN
The Cooper Foundation,
President & CEO



SUSAN K. LIVIO
NJ Advance Media

THE POWERFUL WOMEN OF NEW JERSEY



TAHESHA WAY
Secretary of State of
New Jersey



TAMMY MURPHY
First Lady of New Jersey



THERESA O'CONNOR
Bergen County Deputy
Superintendent of Elections



TOVAH GIDSEG
Teaneck Women
Together



TRACIE DESARNO
Public Strategies Impact



TRICIA MUELLER
CLB Partners

THE POWERFUL WOMEN OF NEW JERSEY



TRISH GRABER
NJ Department of Banking
and Insurance



TRISH ZITA
Kaufman Zita



VICTORIA BROGAN
NJ Hospital Association



WENDY LAZARUS
The Children's Partnership,
Founder