

The **Powerful**  
**WOMEN**  
OF NEW JERSEY

SENATOR WEINBERG'S 2020 WOMEN'S  
**POWER LIST**



**INSIDERNJ.COM**



“THEY ARE THE **MOVERS** AND THE  
**FEMINIST ACTIVISTS**”

They are the  
**Department Heads,**  
**Chiefs of Staff,**  
**Media Gurus** and the **Lobbyists.**  
**They are the Real Women Power Brokers.**

**Loretta Weinberg**

*NJ Senate Majority Leader*



# THE POWERFUL WOMEN OF NEW JERSEY



**TAMMY MURPHY**  
First Lady of New Jersey



# THE POWERFUL WOMEN OF NEW JERSEY



**SHEILA OLIVER**

Commissioner, NJ Department of Community Affairs



## THE POWERFUL WOMEN OF NEW JERSEY



**ALISON ACCETTOLA**  
NJ Senate Democratic Office



**ELAINE ADLER**  
Adler Aphasia Center



**SUE ALTMAN**  
NJ Executive Director,  
Working Families Party



**HELEN ARCHONTOU**  
YWCA



**SAILY M. AVELENDA,  
ESQ.**  
Exec. Dir, NJSDC/Chief of Staff,  
NJ Redistricting Committee



**SHARON BALSAMO**  
NJ State Bar Association

THE POWERFUL WOMEN OF NEW JERSEY



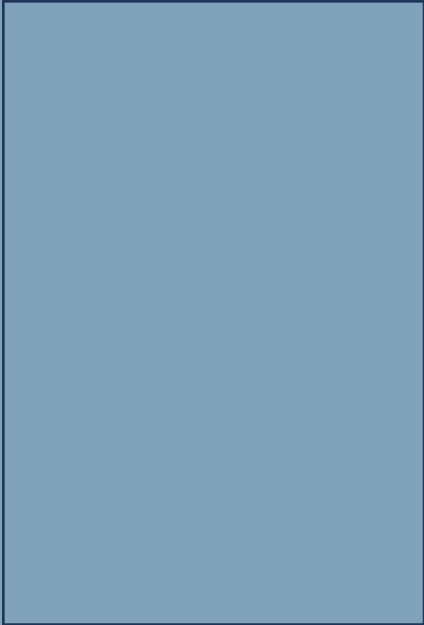
**SUSAN BASS LEVIN**  
The Cooper Foundation,  
President & CEO



**JANINE BAUER, ESQ.**  
Transportation Attorney



**ROSEMARY BERNARDI**  
Women's Political Caucus



**ANDREA BETANCOURT**  
200 Club



**CHRISTINE NORBUT BEYER**  
Commissioner, NJ Dept. of  
Children and Families



**MARIE BLISTAN**  
NJEA



## THE POWERFUL WOMEN OF NEW JERSEY



**KATIE BRENNAN**  
Chief of Staff, HMFA/Fellow RW  
Johnson Foundation Culture of  
Health Leaders Program



**LAUREL BRENNAN**  
NJ State AFL-CIO, Secretary,  
Treasurer



**NICOLA BOCOUR**  
Giffords



**DEBORAH BOZARTH**  
New Jersey Association  
for Justice



**VICTORIA BROGAN**  
NJ Hospital Association



**DANA M. BURLEY**  
Clerk of the General Assembly

## THE POWERFUL WOMEN OF NEW JERSEY



**JULIE BUSBY**  
Philadelphia Inquirer



**CHRISSY BUTEAS**  
Gov't Relations, NJBIA



**RUTHI ZINN BYRNE**  
Founder, Zinn Graves &  
Field Inc.



**MARLENE CARIDE**  
Commissioner, NJ Dept. of  
Banking and Insurance



**CATHLEEN D. BENNETT**  
NJ Hospital Association,  
President & CEO



**NANCY CANTOR**  
Rutgers University Newark,  
Chancellor



## THE POWERFUL WOMEN OF NEW JERSEY



**LYNNE CHAIKEN**  
NJ Activist



**LISA CHAPLAND**  
NJ State Bar Association



**JANNA CHERNETZ**  
Tri-State Transportation  
Campaign



**RHODA CHODOSH**  
Republican Operative



**LAURIE CLARK**  
New Jersey Association of  
Osteopathic Physicians and



**SISTER PATRICIA  
CODEY**  
Hospital Administrator

## THE POWERFUL WOMEN OF NEW JERSEY



**JENNIFER M. COFFEY**  
Association of New Jersey  
Environmental Commissions,  
Executive Director



**DR. SUSAN COLE**  
Montclair State University,  
President



**KELLYANNE CONWAY**  
Former Advisor to President  
Trump



**TAI COOPER**  
VP/NJEDA



**MICHELLE CORYELL**  
Office of Senate President  
Steve Sweeney



**DEBORAH CORNAVACA**  
Office of the Governor



## THE POWERFUL WOMEN OF NEW JERSEY



**ELIZABETH COULTER**  
Dir of Public Health, Planned  
Parenthood Action Fund of NJ



**CRISTINA CUTRONE**  
WEDO Bergen County



**SONIA DAS**  
AMG



**ERICA DAUGHTREY**  
Office of Congressman Albio  
Sires



**JENNY DAVIS**  
PANYNJ



**MARILYN DAVIS**  
Altice

## THE POWERFUL WOMEN OF NEW JERSEY



**MICHELLE DeANGELO**  
Scheduler, Governor Murphy



**AMY DEGISE**  
Chairwoman, Hudson County  
Democratic Organization



**SONIA DELGADO**  
Partner, PPAG



**ANGELA DELLI SANTI**  
NJ Department of Labor



**BARBARA DEMARCO**  
Porzio Government Affairs



**TRACIE DESARNO**  
Public Strategies Impact



## THE POWERFUL WOMEN OF NEW JERSEY



**BRIDGET DEVANE**  
Public Policy Director, HPAAE



**JULIE DIAZ**  
Chief of Staff, NJ Department  
of Labor



**PATRICIA DICOSTANZO**  
Bergen County Superintendent  
of Elections



**MICHELE DIIORGI**  
Chief of Staff, Bergen County  
Executive, James Tedesco



**JUDY DISTLER**  
Teaneck International Film  
Festival, Co-Founder



**BETH DOHM**  
Kaufman Zita Group

## THE POWERFUL WOMEN OF NEW JERSEY



**LINDA DUBOIS**  
Salem County Republican  
Chair



**DIANE DU BRULE**  
Director of Development,  
ACLU-NJ



**ROSI EFTHIM**  
Blue Jersey



**KARIN ELKIS**  
Optimus Partners



**ROSA FARIAS**  
Deputy Executive Director,  
Casino Reinvestment Dev.  
Authority



**BRENDA FLANAGAN**  
NJTV



## THE POWERFUL WOMEN OF NEW JERSEY



**DEBBIE FRANCICA**  
Chief of Staff, Office of the  
Senate Majority Leader  
Loretta Weinberg



**JANICE FULLER**  
Anbaric



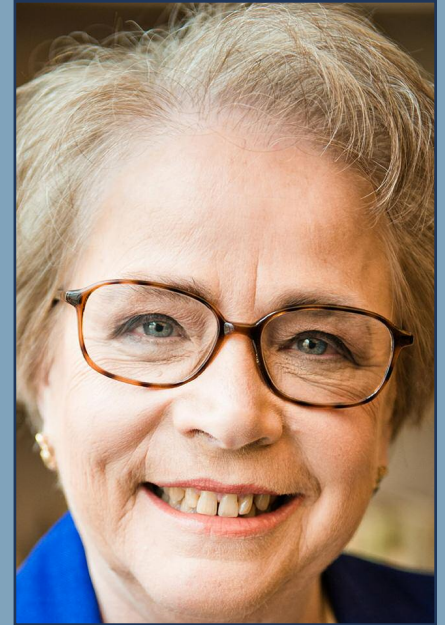
**SUE FULTON**  
Commissioner, NJ Motor  
Vehicle Commission



**BARBARA GEORGE  
JOHNSON**  
Thomas Edison State  
University, Executive Director



**NAOMI GEWIRTZ**  
Adler Aphasia Center



**BARBARA GITENSTEIN**  
Association of Governing  
Boards of Universities and  
Colleges

## THE POWERFUL WOMEN OF NEW JERSEY



**GAIL GORDON**  
GOP Fundraiser



**TRISH GRABER**  
NJ Department of Banking and  
Insurance



**C.J. GRIFFIN, ESQ.**  
OPRA Attorney Specialist



**DIANE GUTIERREZ-  
SCACCETTI**  
Commissioner, NJ Dept of  
Transportation



**PHOEBE HADDON**  
Rutgers University-Camden,  
Chancellor



**BRIGID HARRISON**  
Montclair State University



## THE POWERFUL WOMEN OF NEW JERSEY



**MELISSA HAYES**  
North Jersey Transportation  
Planning Authority



**LYNN HAINES**  
AMG



**KELLY HEYBOER**  
NJ Advance Media



**LYNDA HINKLE**  
Law Offices of Lynda L. Hinkle



**JEANETTE HOFFMAN**  
Marathon Public Affairs,  
President



**DEBORAH HOWLETT**  
University of Delaware

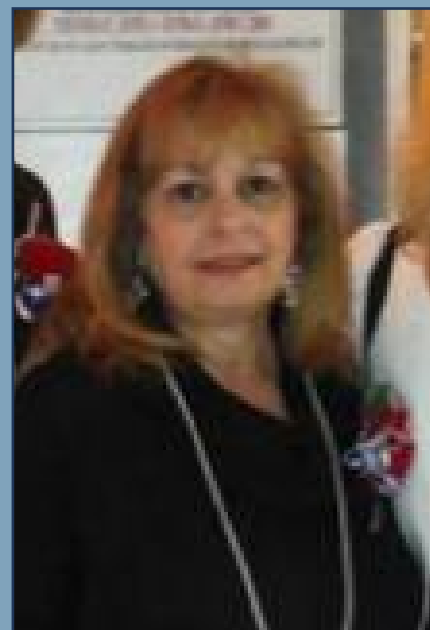
## THE POWERFUL WOMEN OF NEW JERSEY



**MICHELE JAKER**  
MBI-GluckShaw



**KATIE JENNINGS**  
Politico



**LORRAINE JOEWONO**  
Director, Bergen County  
Division of Senior Services



**CAROLE JOHNSON**  
Commissioner, NJ Dept of  
Human Services



**LISA MIZRAHI KAADO**  
Women's Political Caucus



**MARLENE  
KALAYILPARAMPIL**  
New Jersey Medical Society



## THE POWERFUL WOMEN OF NEW JERSEY



**CAROL KATZ**  
Katz Government Affairs,  
Founder



**KATE KING**  
Wall Street Journal



**KAREN KOMINSKY**  
CLB Partners



**ANDREA KATZ**  
Chief of Staff, Commissioner,  
NJ Human Services



**SARA LEE KESSLE**  
TV/Radio personality



**JEANNINE LARUE**  
Sr. VP, Kaufman Zita Group

## THE POWERFUL WOMEN OF NEW JERSEY



**MARY JO LAYTON**  
Hackensack Meridian Health



**STEPHANIE LAGOS**  
Chief of Staff, First Lady,  
Tammy Murphy



**ADELE H. LATOURETTE**  
Director, HUNGER FREE NJ



**LAUREN LALICON**  
Office of the First Lady,  
Tammy Murphy



**WENDY LAZARUS**  
Director, Gov't Relations/Public  
Affairs - Pfizer



**SARAH LECHNER**  
Hackensack Meridian Health



## THE POWERFUL WOMEN OF NEW JERSEY



**CLAUDINE LEONE**  
Government Affairs  
Consulting, Principal



**KATHERINE  
LANDERGAN**  
Politico



**KAY LICAUSI**  
Hoboken Strategy Group,  
President & CEO



**EVELYN LIEBMAN**  
AARP NJ



**SUSAN K. LIVIO**  
NJ Advance Media



**KELLY STEWART MAER**  
Capital Health Systems

## THE POWERFUL WOMEN OF NEW JERSEY



**PAULA MADISON**  
President, Bergen-Passaic  
Chapter of the National  
Coalition of 100 Black Women



**JENNIFER MANCUSO**  
Fair Share Hospitals  
Collaborative, Executive  
Director



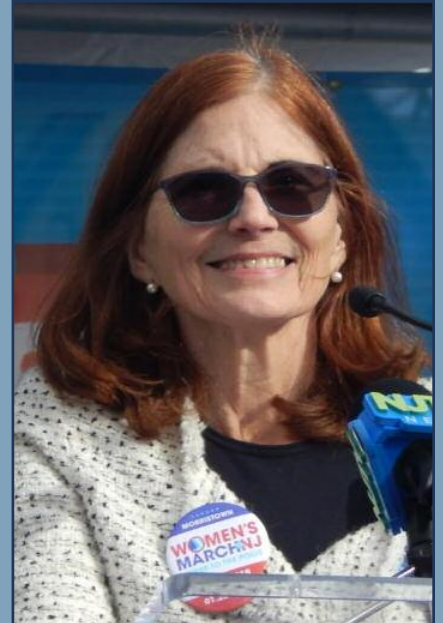
**LISA MANDELBLATT**  
Tom Malinowski for Congress



**AMY MANSUE**  
CEO & President, Inspira  
Health



**SAMANTHA MARCUS**  
NJ Advance Media



**MARCIA MARLEY**  
Blue Wave NJ, President



## THE POWERFUL WOMEN OF NEW JERSEY



**ANNA MARTINEZ**  
State Director, NJ Division  
on Women



**MARISSA MARZANO**  
Head of Communications  
for NJCASA



**SABEEN MASIHI**  
VP of Public Affairs, Capital  
Impact Group in NJ Politics



**LAURA MATOS**  
NJ General Manager, Kivvit &  
Board President LUPE PAC



**MARCELA MAZIARZ**  
Deputy Commissioner, NJ  
Department of Health



**CATHERINE MCCABE**  
Commissioner, NJ Department  
of Environmental Protection

## THE POWERFUL WOMEN OF NEW JERSEY



**LAURIE MCCABE**  
Office of Senator Joe Vitale  
and Assemblyman Craig  
Coughlin



**KATE MCDONNELL**  
Deputy Chief Counsel,  
Governor's Office



**PATTI MCGUIRE**  
Princeton Public Affairs



**BERNADETTE  
MCPHERSON**  
Millenium Strategies



**DR. PATRICIA CAMPOS  
MEDINA**  
Co-Exec Director Worker  
Institute ILR Cornell University



**LINDA METZGER**  
Secretary of the NJ Senate



## THE POWERFUL WOMEN OF NEW JERSEY



**AUDREY MEYERS**  
The Valley Health System,  
President & CEO



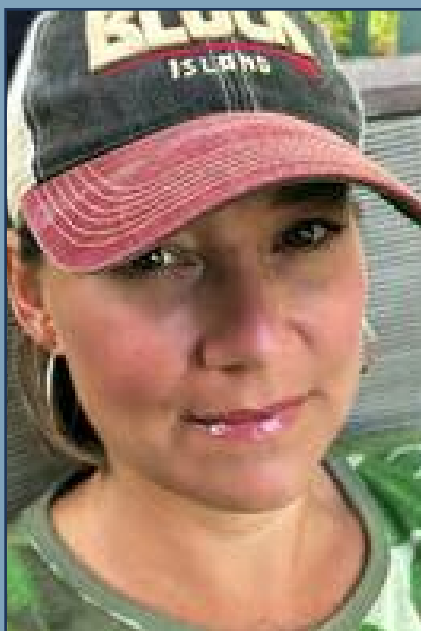
**KELLY MOOI**  
NJBP



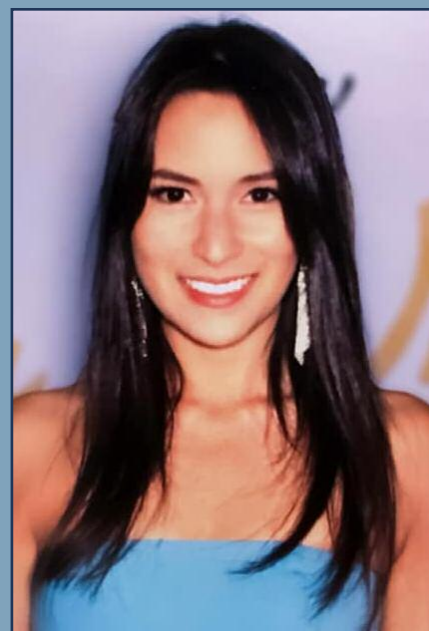
**MAGGIE MORAN**  
Kivvit, Managing Partner



**RITZY MORALES**  
District Director, Office of  
Congressman William Pascrell



**ROBIN MORANTE**  
NJ Judiciary, Chief of Court  
and Judicial Security



**HANNA MORI**  
Office of Senator Cory Booker

## THE POWERFUL WOMEN OF NEW JERSEY



**DENA MOTTOLA  
JABORSKA**  
NJ Citizen Action



**JANICE MIRONOV**  
Chairwoman - Mercer County  
Democratic Organization



**TRICIA MUELLER**  
CLB Partners



**ELIZABETH MAHER  
MUOIO**  
NJ State Treasurer



**MARY NOONAN**  
Chief of Staff, Office of  
Congressman Chris Smith



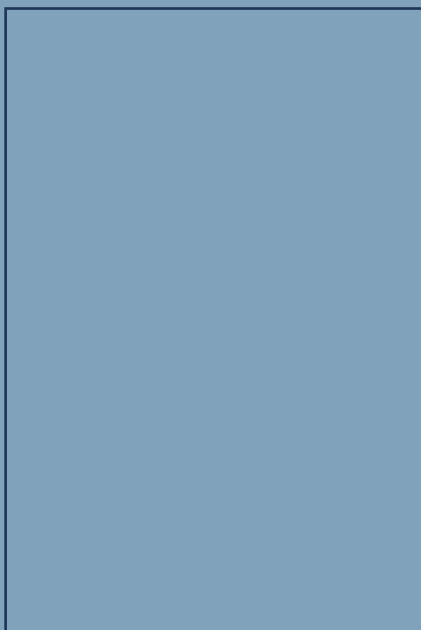
**LYNN NOWAK**  
Porzio Government Affairs



## THE POWERFUL WOMEN OF NEW JERSEY



**JULIE O'BRIEN**  
WEDO Bergen County/Director,  
Bergen County Office of  
Children



**THERESA O'CONNOR**  
Bergen County Deputy  
Superintendent of Elections



**BEA O'ROURKE**  
Longtime Activist



**SHANTÉ PALMER**  
Gov't Relations, Montclair State  
University



**DEBBIE PARKS**  
International VP, AFSCME



**DR. LAUREN  
PECCORALO**  
Leonida Action Alliance

## THE POWERFUL WOMEN OF NEW JERSEY



**JUDITH PERSICILLI**  
Commissioner, NJ Department of Health



**JEAN PIERCE**  
Public Policy Staff, HPAE



**CRYSTAL PRUITT**  
Deputy Director for Clean Energy Equity at BPU



**ARLENE QUINONES PEREZ**  
DeCotiis, FitzPatrick and Cole / Hunterdon County Democratic Committee, Chairwoman



**LISA RANDALL, ESQ.**  
Commissioner, Bergen County Improvement Authority & Member



**JEAN RIMBACH**  
The Bergen Record



## THE POWERFUL WOMEN OF NEW JERSEY



**MARY KAY ROBERTS**  
Riker Danzig



**IDIDA RODRIGUEZ**  
1868 Public Affairs



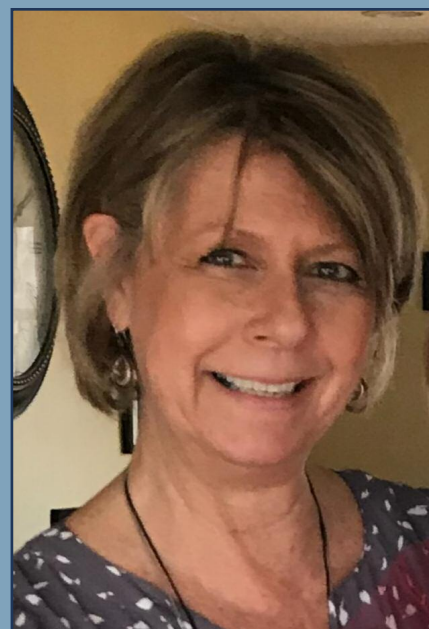
**LARA RODRIGUEZ**  
Bergen County Freeholder  
Board



**JULIE ROGINSKY**  
Co-Founder, Lift Our Voices



**PAULA ROGOVIN**  
Activist



**DONNA RORER**  
NJ Senate Majority Office

## THE POWERFUL WOMEN OF NEW JERSEY



**BARBARA ROSEN**  
1st Vice President, HPA



**HETTY ROSENSTEIN**  
NJ Director, CWA



**DAWNE ROWE**  
Chairwoman, Sussex County  
Democratic Committee



**LORI SACKLER**  
Bergen Indivisible, Founder  
& President



**CHRISTINE SADOVY**  
Chief of Staff, Board of Public  
Utilities



**PHYLLIS SALOWE-  
KAYE**  
NJ Citizen Action, Executive  
Director



## THE POWERFUL WOMEN OF NEW JERSEY



**PEG SCHAFFER**  
Vice Chair, NJ Democratic  
State Committee



**JENN SCIORTINO**  
NJ Department of Treasury



**MARSHA SHAPIRO AND  
LOUISE WALPIN**  
Marriage Equality Activists /  
STAND Central NJ



**CHRISTINE SHIPLEY**  
Executive Director, NJ Senate  
Minority Office



**CAROL ANN SHORT**  
CEO - NJ Builders Association



**MILLY SILVA**  
SEIU Local 1199

## THE POWERFUL WOMEN OF NEW JERSEY



**CARLY SITRIN**  
Politico



**NANCY ERIKA SMITH**  
Smith Mullin P.C.



**RASHEIDA SMITH**  
Dunton Consulting



**ANTONIA SPANO**  
Pam's List



**LILO STAINTON**  
NJ Spotlight



**CHRISTINE STEARNS**  
Gibbons P.C.



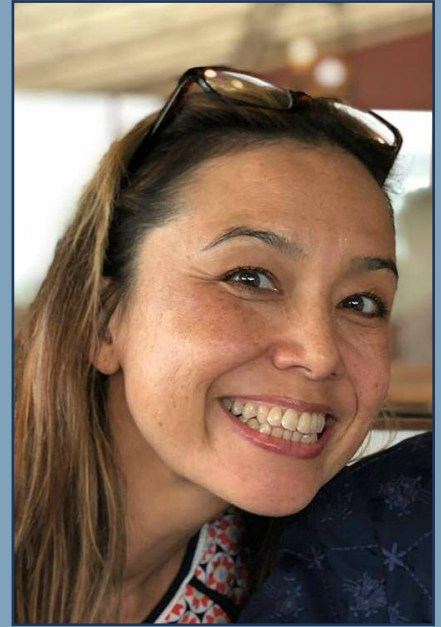
## THE POWERFUL WOMEN OF NEW JERSEY



**CANDY STRAIGHT**  
Republican Fundraiser /  
Producer of Film "Equity"



**GRACE STROM POWER**  
VP, Regulatory Affairs at  
Homeserve USA



**LISA TAKEUCHI-  
CULLEN**  
Leonora Action Alliance / NBC  
TV Writer



**JENNIFER TAYLOR**  
NJ Assembly Majority Office



**PATRICIA TEFFEN-  
HART**  
Exec. Dir, NJ Coalition Against  
Sexual Assault



**DIANE TESTA**  
One of two women on the NJ  
Redistricting Commission

## THE POWERFUL WOMEN OF NEW JERSEY



**RENEE TRABERT**  
Office of the Senate Minority  
Leader Tom Kean



**ANN TWOMEY**  
President, HPAE (retired)



**BRIANA VANNOZZI**  
NJTV



**JENNIFER VELEZ**  
RWJBarnabas Health



**MARY WACHTER**  
Genentech



**DEBBIE WALSH**  
Center for American Women  
and Politics, Director



## THE POWERFUL WOMEN OF NEW JERSEY



**ROBIN WALTON**  
Thomas Edison State  
University



**LINDY WASHBURN**  
The Bergen Record



**TAHESHA WAY**  
Secretary of State of New  
Jersey



**SHARI WEINER**  
Murphy McKeon P.C.



**KATIE WERTHEIMER**  
Chief of Staff, Asw Valerie  
Huttle



**DEBBIE WHITE**  
President, HPAE

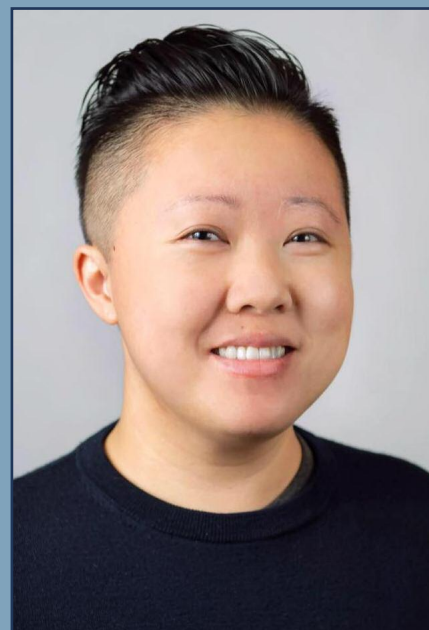
## THE POWERFUL WOMEN OF NEW JERSEY



**MELANIE  
WILLOUGHBY**  
Executive Director, NJ



**COLLEEN WILSON**  
The Bergen Record  
Business Action Center



**ANNA WONG**  
Progressive Activist/Organizer



**CATHERINE YAXLEY**  
Vice President, Holy Name  
Medical Center



**ELISE YOUNG**  
Bloomberg



**KATE ZERNIKE**  
The New York Times



## THE POWERFUL WOMEN OF NEW JERSEY



**CECILIA ZALKIND**  
Advocates for Children of NJ,  
President & CEO



**TRISH ZITA**  
Kaufman Zita



**CHRISTINA ZUK**  
Princeton Public Affairs Group