

POWERFUL **WOMEN** OF NEW JERSEY



CELEBRATING SOME OF THE MOST
INFLUENTIAL & COURAGEOUS WOMEN
IN THE STATE OF NEW JERSEY

INSIDERNJ.COM



***I AM ONCE AGAIN HONORED TO SHARE MY ANNUAL LIST
CELEBRATING SOME OF THE MOST POWERFUL, COURAGEOUS,
AND FEARLESS WOMEN IN THE STATE OF NEW JERSEY.***

This carefully curated group of remarkable women serves as a powerful reminder of the value women bring to every space we occupy including politics, business, education, and healthcare. Our voices drive humanity forward, advocating for fairness, dignity, and opportunity, and pushing for fair wages, access to affordable housing and healthcare, expanded educational opportunities, and true economic mobility.

The resilience of women in 2025 was on full display. It kicked into full drive with the People's March on January 18, a resistance march across the United States and around the globe, where tens of thousands of people came together just two

days before the inauguration of the 47th President of the United States. The march expressed resistance to turning the clock back on harmful policies while advocating for women's rights, LGBTQ+ rights, and human rights. There was a powerful sense of solidarity as people united around the world with a shared commitment to building a better future and uplifting humanity.

The fragility of democracy was further on display as we witnessed attacks on inclusive programs that, less than a year ago, embraced diversity and equity. The federal government carried out mass terminations, and by springtime, more than 300,000 Black women had either exited or

been pushed out of the workforce, despite Black women having some of the highest educational credentials in the country. This shift carries a dramatic and troubling economic impact for individuals, families, and communities.

New Jersey also emerged as a state to watch with a Governor's race that reflected both challenge and progress. Among both major parties, only one woman had the courage to enter the race, Congresswoman Mikie Sherrill. Congresswoman Sherrill secured victories over five male Democratic primary contenders Mayor Ras Baraka, Mayor Steve Fulop, Congressman Josh Gottheimer, former Mayor Sean Spiller, and former Senator Steve Sweeney. She then advanced to the general election and decisively earned voter confidence by defeating Jack Ciattarelli. In doing so, voters sent a clear and powerful message, embracing women as executive leaders and electing the first Democratic woman Governor in New Jersey's history.

Governor – Elect Mikie Sherrill's leadership also carried significant coattails, ushering in the largest Democratic supermajority in the New Jersey Legislature since 1973. Victories extended to county, municipal, and school board seats across the state. Once again, voters spoke clearly, recognizing women's leadership and affirming a broader commitment to inclusion through the power of the ballot.

Further strengthening this moment, Lieutenant Governor Elect Rev. Dr. Dale Caldwell will lead with conviction and brilliance while protecting voter rights in his role as Secretary of State, an essential function in

safeguarding democracy. I would also be remiss if I did not acknowledge the three outstanding women who held the position prior, Kim Guadagno, Sheila Y. Oliver and Tahesha Way.

While I have personally made the decision to sunset my political life in the Legislature, I remain deeply hopeful and energized by the work that will continue to advance our great state and serve as a testament to other states on the enduring power of voting. Our differences should be learned, embraced, and encouraged for societal advancement. History has shown us through science, economics, culture, and the arts that progress is born from diversity of thought and experience.



"I am and always will be a catalyst for change." – Shirley Chisholm

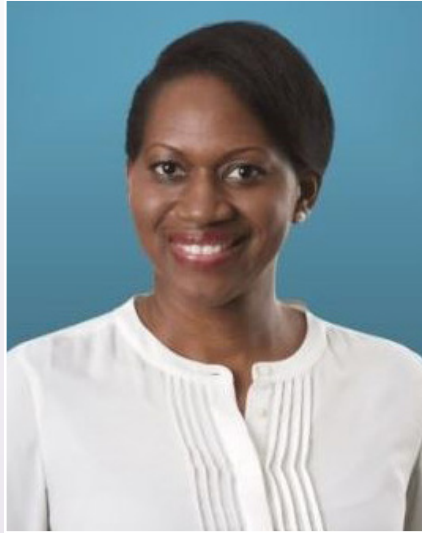
Therefore, I am excited for the release of the Insider NJ 2025 Powerful Women of NJ.

With deep gratitude to Senator Loretta Weinberg.

THE POWERFUL WOMEN OF NEW JERSEY



Donna Abene
Vice-Chair, LD39
Democratic



Onome Adejemilua, Esq.
Corporate Partner,
McCarter & English, LLP.



Harbani Ahuja, Esq.
Senior Counsel,
Economic Justice
Program New Jersey
Institute for Social
Justice



Stephanie Albanese
Policy and Government
Relations Consultant,
River Crossing Strategy
Group



Lauren Albrecht
Sr. Director of Advocacy
& Organizing, Garden
State Equality



Alyana Alfaro-Post
Executive
Communications
Lead, PSE&G

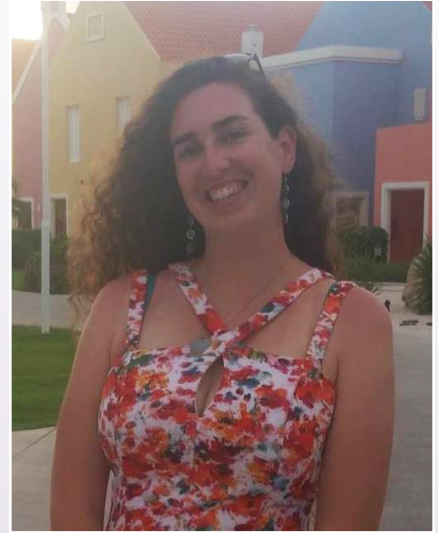
THE POWERFUL WOMEN OF NEW JERSEY



Lynne Algrant
President & CEO,
Meadowlands Area
YMCA



Lisa Almeida
Chief Counsel, NJ
Economic Development
Authority



Claire Anderson
Chief of Staff,
Assemblywoman
Ellen Park



Leslie Anderson
President & CEO,
NJRA



Regina G. Appolon
Political Operative,
PPAG



Helen Archontou
Chief Executive Officer,
YWCA Northern NJ

THE POWERFUL WOMEN OF NEW JERSEY



Saily M. Avelenda, Esq.

Senior Advisor, NJ
Democratic State
Committee



Mishael Azam

COO & Sr. Manager,
Legislative Affairs,
Medical Society of NJ



Alexis Bailey

Associate, Public
Strategies Impact



Alex Ball

Campaign Manager,
Mikie Sherrill for
Governor



Missy Balmir

Partner, Thorough
Planning



Sharon Balsamo

Assistant Executive
Director / General
Counsel, NJ State Bar
Association

THE POWERFUL WOMEN OF NEW JERSEY



Paulina Banasiak
Executive Director,
The New Jersey Wind
Alliance



Nabila Baptiste
Chief of Staff,
Lt. Governor Dale
Caldwell



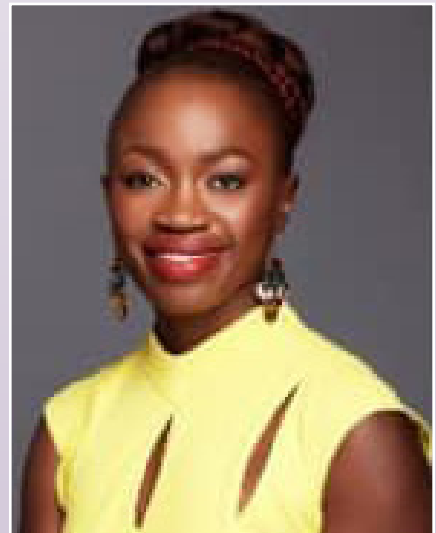
Kate Barry
Aide to the Governor,
State of New Jersey



Mia Batista, Esq.
Partner, Seyforth
Shaw LLP



Janine Bauer, Esq.
Partner, Szaferman
Lakind



Adenah Bayoh
Founder, Adenah
Bayoh & Companies

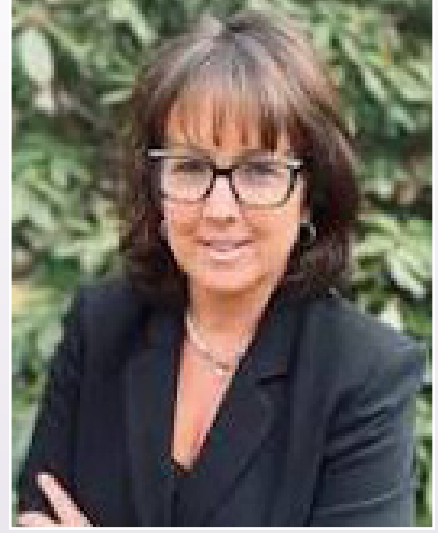
THE POWERFUL WOMEN OF NEW JERSEY



Cathleen Bennett
President & CEO, NJ
Hospital Association



Shadaya Bennett
Chief of Staff,
Assemblywoman
Shanique Speight



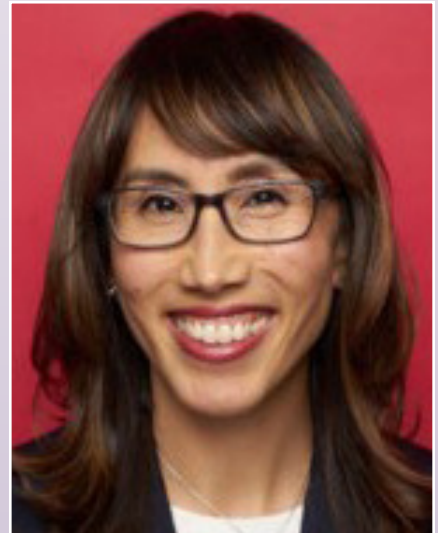
Rosemary Bernardi
Chairperson of
Communications,
Women's Political
Caucus of NJ



Mollie Binotto
Vice President, Sena
Kozar Strategies



Shaylynn Bivens
Senior Legislative
Analyst, Advocates
for Children of New
Jersey (ACNJ)



Valerie Blau
Sr. Director, Corporate
Partnerships, NJPAC

THE POWERFUL WOMEN OF NEW JERSEY



Sam Bobila

Chief Development Officer, Orangewood Foundation



Rosalee Boyer

Co-Founder, Salvation & Social Justice



Kirsten Brannigan, Esq.

Managing Partner, KS Branigan Law, P.C.



Laurel Brennan

Secretary-Treasurer & Member of Workgroup on Harassment, Sexual Assault & Misogyny in NJ Politics, NJ State AFL-CIO



Catherine Brienza

Founder & President, JOLT Ridgewood



Victoria Brogan

Senior Vice President of Strategic Initiatives, NJ Hospital Association

THE POWERFUL WOMEN OF NEW JERSEY



Nicole Brown, Esq.
General Counsel, NJ
General Assembly



Dana M. Burley
Clerk, NJ General
Assembly



Jesse Burns
Executive Director,
League of Women
Voters of NJ



Coleen Burrus
Executive Director
Strategic Partnerships &
Research Development,
Princeton University



Julie Busby
Sr. Editor-at-Large,
Philadelphia Inquirer



Chrissy Buteas
President & CEO,
Healthcare Institute
of NJ

THE POWERFUL WOMEN OF NEW JERSEY



Ruthi Zinn Byrne

Founder, Zinn Graves
& Field Inc.



Mary Campbell Cruz

Chief of Staff, Office
of Congressman
Donald Norcross



**Dr. Patricia Campus
Medina**

Executive Director, The
Worker Institute at ILR
Cornell University / NY
State AFL-CIO



Carlotta Chan

Vice President, Investor
Relations, PSE&G



Lisa Chapland

Assistant General
Counsel & St. Managing
Director, Government
Affairs, NJ State Bar
Association



Crystal Charley

Policy Manager,
Fair Share Housing
Center

THE POWERFUL WOMEN OF NEW JERSEY



Laurie Clark
President, Legis-Serve



Sister Patricia Codey
President, Catholic
Healthcare Partnership
of NJ



Jennifer M. Coffey
Executive Director/
Watershed Represen-
tative, Association of NJ
Enviromental Commis-
sions/NJ Water Supply
Advisory Council



Linda Coles
Public Relations
Manager, NJM
Insurance Group



Tai Cooper
Chief Community
Development Officer,
NJEDA



Lilly Corcoran
Executive Director,
Women's Rights
Information Center

THE POWERFUL WOMEN OF NEW JERSEY



Deborah Cornavaca
Director, Government
Relations, NJEA



Alea Couch
Director of Policy &
External Affairs, NJDCA



Jennifer Crea Aydjian
Chief of Staff, Senator
Troy Singleton



Carol Cuadrado
MPA, Associate Vice
President, Government
& University Relations,
William Paterson
University



Sara Cullinane, Esq.
Director, Co-Founder,
Make the Road NJ



Andrea Cunnell
Director of External
Relations, Rutgers
University

THE POWERFUL WOMEN OF NEW JERSEY



Linda Czipo

President & CEO, New Jersey Center for Non-profits



Dyese Davis

Chief of Staff, Office of Senator Vin Gopal & Asw. Margie Donlon & Luanne Peterpaul



Jenny Davis

Chief of Staff, Office of Hudson County Executive Craig Guy



Marilyn Davis

President, MDD Connections, LLC.



Michellene Davis, Esq.

President & CEO, National Medical Fellowships, Inc.



Wartyna L. Davis, Ph.D.

Dean, College of Arts, Humanities and Social Sciences, William Paterson University

THE POWERFUL WOMEN OF NEW JERSEY



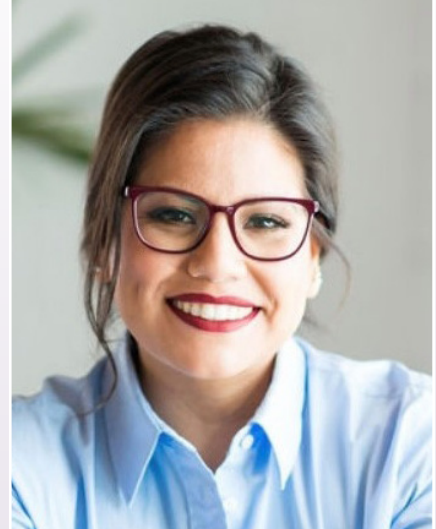
Bryana De Veaux

Director of Legislative Affairs, NJ Department of Environmental Protection



Sonia Delgado

Partner, PPAG



Iris Delgado

Executive Director, NJ Assembly Campaign Committee



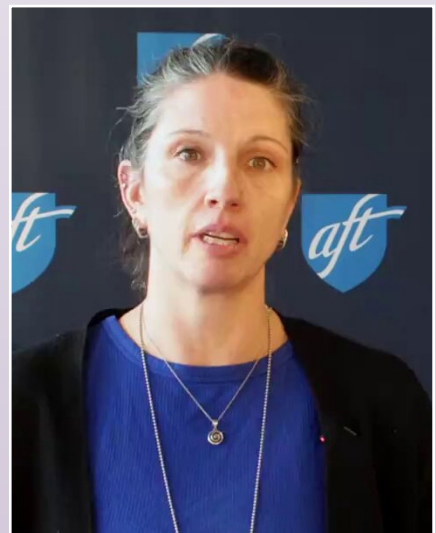
Barbara Demarco

Vice President, Porzio Governmental Affairs



Tracie Desarno

Senior Partner, Public Strategies Impact



Bridget Devane

Public Policy Director, HPAE

THE POWERFUL WOMEN OF NEW JERSEY



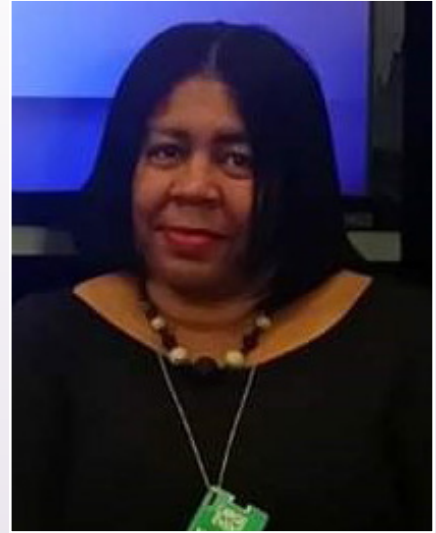
Julie Diaz

Deputy Commissioner,
NJ Department of
Labor & Workforce
Development



Michele Dilorgi

Executive Director,
Housing Authority of
Bergen County



Stephenine Dixon

National Political
Operative, NAN



Beth Dohm

Executive Vice President,
Zita Group



Brianna Donahue

Director of Policy &
Government Affairs,
Inspira Health



Tara Dowdell

President, Tara Dowdell
Group

THE POWERFUL WOMEN OF NEW JERSEY



Susan Dromsky-Reed, Esq.

President, Executive Women of NJ



Diane Du Brule

Director of Development,
ACLU-NJ



Amalia Duarte

Public Affairs Director
ECLC of NJ



Teri Duda

Senior Vice President,
Government Affairs,
NJ Berkeley College



Rosi Efthim

Blue Jersey NAN



Francine Ehret

Area Director, CWA-NJ

THE POWERFUL WOMEN OF NEW JERSEY



Karin Elkis

Senior Vice President,
Optimus Partners, LLC.



Sarah Fajardo

Implementation
Manger, The Clean
Slate Initiative



Judith P. Fenelus

CEO of JPF Group



Princess Fils-Aime

Director of School
Leadership Development,
KIPP NJ& KIPP Miami



Althea D. Ford

Vice President of
Government Affairs,
NJBIA



Reva Foster

Chair, NJ Black Issues
Convention

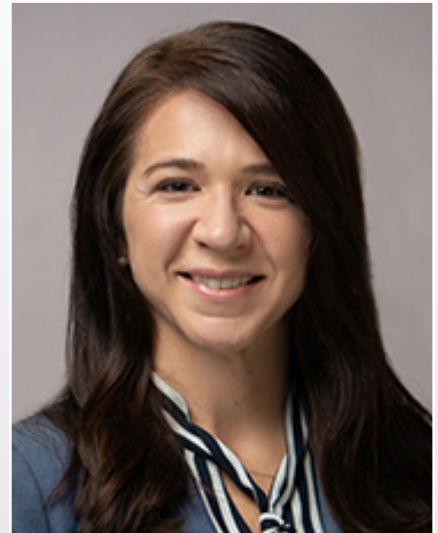
THE POWERFUL WOMEN OF NEW JERSEY



Ferlanda Fox Nixon, Esq.
President & CEO,
Newark Regional
Business Partnership



Jeanine Frisby-LaRue
Partner, Moxie Strategies



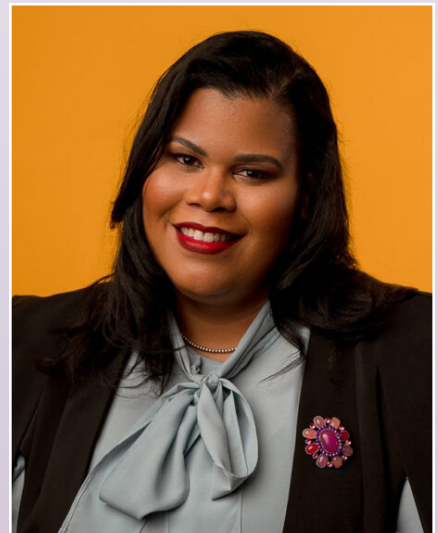
Janice Fuller
Lobbyist, PPAG



Barbara George Johnson
Vice President of Ex-
ternal Affairs & Urban
Policy & Research, Kean
University



Naomi Gewirtz
CEO and President,
Adler Aphasia Center



Tyneisha Gibbs
Director of Policy and
Youth Advocacy, New
Jersey's Afterschool & OST
Professional Network

THE POWERFUL WOMEN OF NEW JERSEY



Noreen Giblin

Chief of Staff, NJ State
Board of Public Utilities



Aisha Glover

Global Head of
Urban Innovation,
Audible, Inc.



Gail Gordon, Esq.

Commissioner/GOP
Fundraiser, New Jersey
Sports and Exposition
Authority



CJ Griffin, Esq.

Partner/Director of the
Justice Gary S. Stein,
Public Interest Center,
Pashman, Stein, Walder,
Hayden PC



Christine Guhl-Sadovy

President & Commis-
sioner, New Jersey
Board of Public Utilities
(NJBPUP)



Phoebe Haddon

Chancellor Emerita &
Professor of Law,
Rutgers University,
Camden

THE POWERFUL WOMEN OF NEW JERSEY



Shavon Harris

Managing Director
of Network Operations,
BRICK Education
Network



Abbey True Harris

Chief Legal Officer and
SVP of External Affairs/
Owner, Reciprocal Man-
agement Corp./Abbey
True, LLC.



Brigid Harrison

Dept. Chair & Professor,
Dept. of Political Science
& Law, Montclair State
University



Melissa Hayes

Senior Director of
Communications, North
Jersey Transportation
Planning Authority



Lynn Haynes

Partner & Owner,
Advocacy & Manage-
ment Group



Zoe Heath

Chairwoman, Sussex
County Democratic
Committee

THE POWERFUL WOMEN OF NEW JERSEY



Natasha Hemmings
CEO, Girl Scouts Heart
of New Jersey



Brianna Hill
Sr. Account Director,
Mike WorldWide



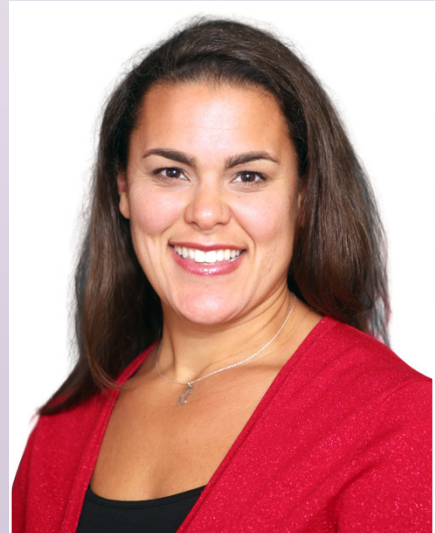
Lynda Hinkle, Esq.
CEO/Managing Partner,
Law Offices of Lynda L.
Hinkle, LLC.



Jill Hirsh
President and CEO
of the New Jersey
Sports & Exposition
Authority



Jeanette Hoffman
President, Marathon
Public Affai



Rachel Holland
Executive Director, The
Hamilton Partnership

THE POWERFUL WOMEN OF NEW JERSEY



Nicole Hollingsworth Harris, EdD, MCHES

Sr. Vice President,
Social Impact and
Population Health,
Hackensack Meridian
Health



Major General Lisa J. Hou, D.O.

Director of the Office
of the Joint Surgeon
General, The National
Guard Bureau



Dianne Houenou

Chair, NJ Cannabis
Regulatory Commission



Deborah Howlett

Executive Director/
Lecturer, NJ State House
News Service/ Rutgers
Universit



Michele Jaker

Partner, MBI-GluckShaw



Cindy R. Jebb

President, Ramapo
College of NJ

THE POWERFUL WOMEN OF NEW JERSEY



Lorraine Joewono
Executive Director,
Bergen County Division
of Senior Services



Courtney Johnson
Associate, Government
& Regulatory Affairs
Gibbons Law



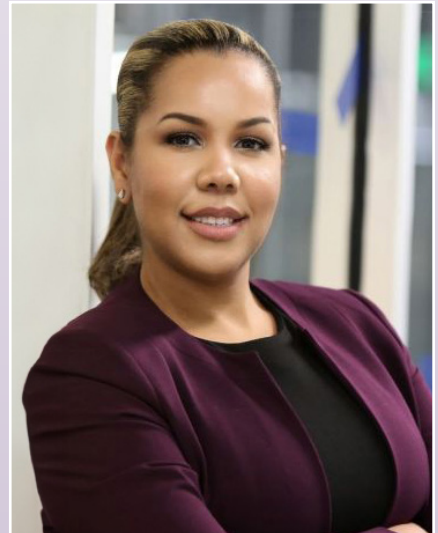
Jayne Johnson, Esq.
Cabinet Secretary
& Director, Office
of Diversity, Equity,
Inclusion, and Belonging



Natalya Johnson, Esq.
Senior Counsel, Johnson
& Johnson



Ashanti Jones
Policy Analyst, NJISJ



Sarah Jones, Esq.
Senior Director,
Government Affairs,
Horizon BlueCross,
Blue Shield of NJ

THE POWERFUL WOMEN OF NEW JERSEY



Lisa Mizrahi Kaado
Member, Women's
Political Caucus NJ



Ami Kachalia
Campaign Strategist,
ACLU of NJ



Rippi Karda, Esq.
Associate General
Counsel, Verizon



**Amanda Karpinski-
Gorman**
Executive Director, PTK
Foundation



Carol Katz
Founder, Katz
Government Affairs



Eileen Kean, Esq.
Sr. Vice President,
Komajthy & Kean

THE POWERFUL WOMEN OF NEW JERSEY



Sara Lee Kessler
TV/Radio Personality,
710 WOR/I Heart Radio



Uyen "Winn" Khuong
Executive Director,
Action Together NJ
(ATNJ)



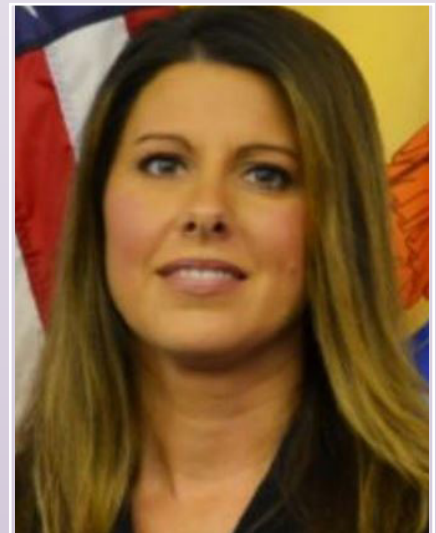
Celia King
CEO, Leadership
Newark, Inc.



Karen Kominsky
Partner, CLB Partners



Cheryl Krouse
Chief of Staff, Congress-
man Josh Gottheimer



Victoria Kuhn, Esq.
Commissioner,
NJ Department of
Corrections

THE POWERFUL WOMEN OF NEW JERSEY



Suzanne Kunis

President & CEO of
NovaWell Health
Horizon Healthcare
Services, Inc.



Stephanie Lagos

Deputy Chief of Staff,
Governor Murphy & First
Lady, Tammy Murphy



Lauren Lalicon

Policy Director Office
of First Lady Tammy
Murphy



Adele H. Latourette

Assistant Vice President
of Policy & Advocacy,
Community Food Bank
of NJ



Elena Lavarreda

New England Janitorial
Division Director, 32BJ
SEIU



Mary Jo Layton

Director, Executive
Communications Media
Relations, Hackensack
Meridian Health

THE POWERFUL WOMEN OF NEW JERSEY



Jill Lazare
President, NOW
New Jersey



Wendy Lazarus
Principal, WML Public
Affairs



Sarah Lechner
Senior Vice President,
Chief of External Affairs,
Hakensack Meridian
Health



Kellie LeDet
Chief Government
Affairs Officer, KEAN
University



Claudine Leone
Principal, Government
Affairs Counsel



Ebonee Lewis, Esq.
VP & Associate
General Counsel, Labor
and Employment, CVS
Health

THE POWERFUL WOMEN OF NEW JERSEY



Kay Licausi
President & CEO,
Hoboken Strategy
Group



Evelyn Liebman
Director of Advocacy,
AARP, NJ



**Tina-Marie Lopez,
M.P.A.**
Executive Director,
International Rescue
Committee



**Tricia Macquire,
M.Ed., RYT**
Founder & Chairwoman,
Elect Women NJ



Linda Malave
Director of Strategic
Partnerships, Prudential
Financial



**Tenisha Malcolm-
Wint**
Director, Girl Scouts
Heart of NJ

THE POWERFUL WOMEN OF NEW JERSEY



Jennifer Mancuso

Director, Government Affairs, NJLECET, LIUNA Eastern Region



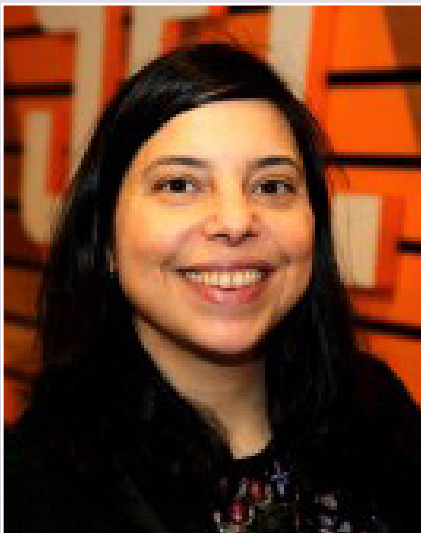
Amy B. Mansue

President & CEO, Inspira Health Network



Marcia Marley

President, Blue Wave NJ



Anna Martinez

Director, NJ Division on Women, NJ Dept. of Children & Families



Marissa Marzano

Communication Manager, NJCASA



Sabeen Masih

Principal, Capital Impact Group

THE POWERFUL WOMEN OF NEW JERSEY



Lori Matheus

Senior Vice President,
Finance & Development,
NJEDA



Laura Matos

Partner, MAD Global
Strategy Group



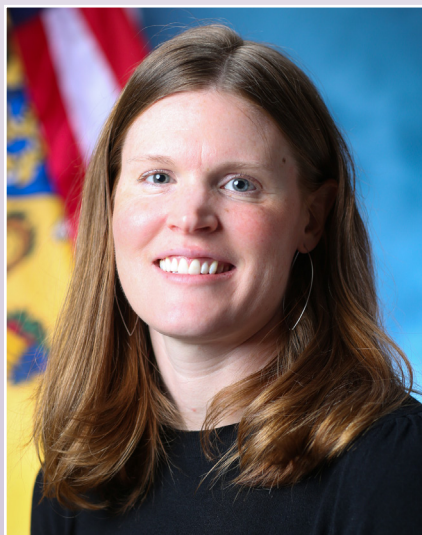
**Kathryn K. "Katy"
McClure**

Partner, McClure
Burden, LLC.



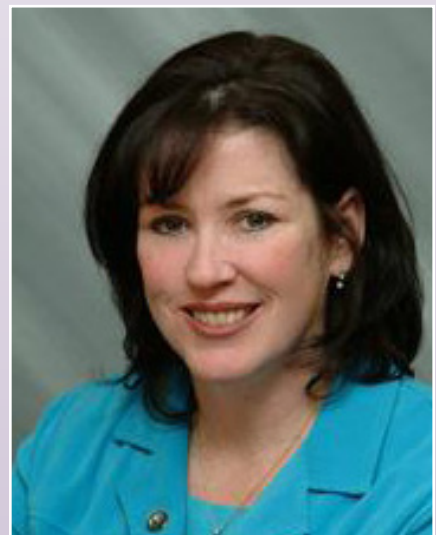
Courtney McCormick

Senior Vice President,
Audit, Enterprise Risk &
Compliance, PSE&G



Kate McDonnell

Chief Counsel to the
Attorney General



**Bernadette McPherson,
Esq.**

Director of Outreach,
Millenium Strategies

THE POWERFUL WOMEN OF NEW JERSEY



Daysi Maria Mejia, Esq.
VP and Assistance
General Counsel, Chase



Jenna Mellor
Executive Director,
NJ Harm Reduction
Coalition



**Dayna Mercadante,
Ph.D.**
Scientific Program
Manager, Dana-Faber
Cancer Institute



Audrey Meyers
CEO Emeritus, The Valley
Health System



Antoinette Miles
State Director, NJ
Working Families Party



Janice Mironov
Mayor & Chairwoman
East Windsor, Mercer
County Democratic
Organization

THE POWERFUL WOMEN OF NEW JERSEY



Kelly Mooij

Program Director,
Northeast Policy,
Energy Foundation



Ritzy Morales

Senior Personnel
Technician, Bergen
County Board of Social
Services



Maggie Moran

CEO, Moxie Strategies



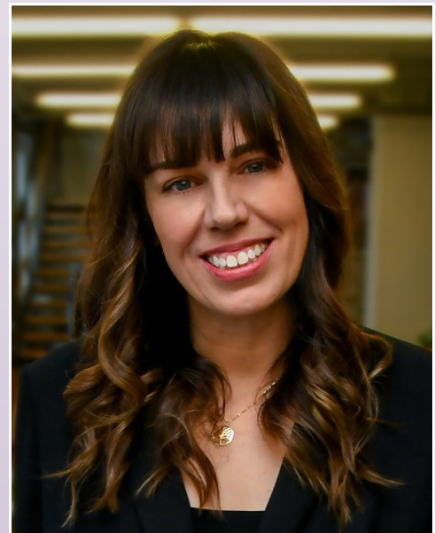
Hanna Mori

State Director, Office of
Senator Cory Booker



Dena Mottola Jaborska

Executive Director, NJ
Citizen Action



Tricia Mueller

Founder and CEO,
Groundwork Strategies

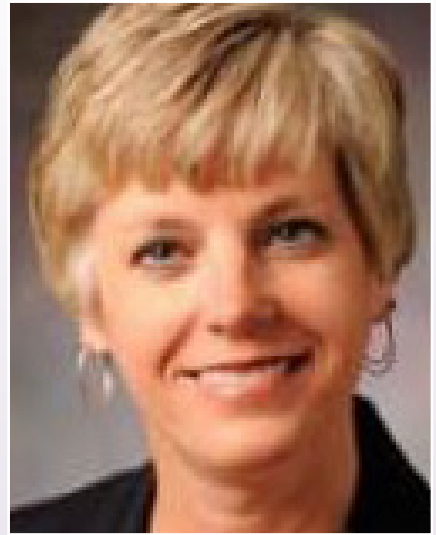
THE POWERFUL WOMEN OF NEW JERSEY



Jessica Murray
Vice President,
Hoboken Strategy
Group



Mary Noonan
Chief of Staff, Office
of Congressman Chris
Smith



Cheryl Norton
Exec, VP & COO,
American Water



Lynn Nowak
Executive Vice
President, Porzio
Government Affairs



Julie O'Brien
Director, Bergen County
Dept. of Human Services,
Office for Children



**Marcela Ospina
Maziarz, MPA**
VP for Community
and Government
Affairs, Thomas Edison
State University

THE POWERFUL WOMEN OF NEW JERSEY



Shante Palmer

Vice Chancellor External
& Governmental
Relations, Rutgers
University, Newark



Henal Patel, Esq.

Law & Policy Director,
New Jersey Institute for
Social Justice (NJISJ)



Jeanine Pedoto

Vice President,
Prudential Financial



Anne-Marie Peracchio

Managing Director,
Marketing & Energy,
NJ Natural Gas



**Chris Pernell, MD, MPH,
FACPM**

Director, Center for
Health Equity, NAACP



Marjorie Perry

President & CEO,
MZM Construction &
Management

THE POWERFUL WOMEN OF NEW JERSEY



Blenda Pinto

Director of Corporate and Government Affairs, Northeast Region for United Airlines



Crystal Pruitt

External Affairs Lead, Atlantic Shores Offshore Wind



Dr. Lovell Pugh-Bassett

President, Camden County College



Marlene Sneha Puthiyath, MHA

Associate Director of Legislative Alliance/
Adjunct Professor,
Purdue Pharma L.P./
Seton Hall University



Arlene Quinones Perez, Esq.

Equity Partner & Chairwoman, DeCotiis, FitzPatrick, Cole & Giblin, LLP./Hunterdon County Democratic Committee



Emy Quispe

Deputy Chief of Staff,
Office of Governor
Murphy

THE POWERFUL WOMEN OF NEW JERSEY



Jigna Rao

CEO, Millhill Child and Family Development



Michele Rawls-Ralph

Chief Human Resources Officer & Government Affairs Liaison, WBGO-Newark Public Radio, Inc.



Dana Redd

President & CEO, Camden Community Partnership, Inc.



Mary Kay Roberts

Partner, Riker Danzig Scherer Hyland & Perretti LLP.



Idida Rodriguez

Managing Partner, 868 Public Affairs



Nicole Rodriguez

President, NJPP

THE POWERFUL WOMEN OF NEW JERSEY



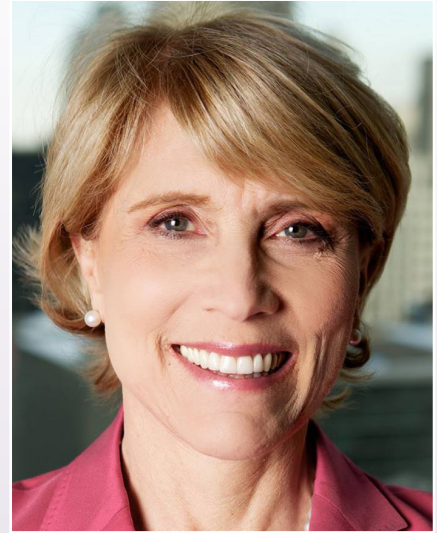
Racquel Romans-Henry

MPP, Policy Director,
Salvation & Social
Justice



Barbara Rosen

Vice President, HPAE



Lori Sackler

Senior VP, Morgan
Stanley



Phyllis Salowe-Kaye

Executive Director, NJ
Citizen Action



Nichelle Santos

Founder and CEO,
CannaCoverage
Insurance



Alma Saravia

Attorney, Healthcare
Law, Flater-Greenberg
P.C.

THE POWERFUL WOMEN OF NEW JERSEY



Peg Schaffer

President & Managing Principal/Chair, Shain Schaffer PC Law Firm/
Somerset County Democratic Committee



Kenyanna Scott Bell

Vice President, Assistant Counsel, Global Head of Litigation, ADP



Safanya Searcy

Deputy Director, SEIU



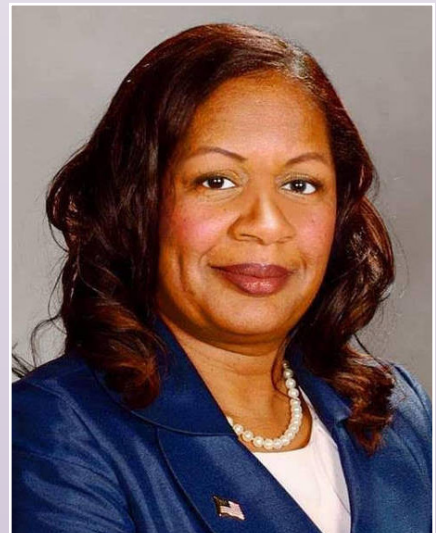
Hon. Ronny Jo Seigal

Board Chair, Women's Rights Information Center



Jennifer Sellitti

Public Defender, State of NJ



Dr. Darcella Sessomes

Chief of Programs and Reintegration, NJ Dept. of Corrections

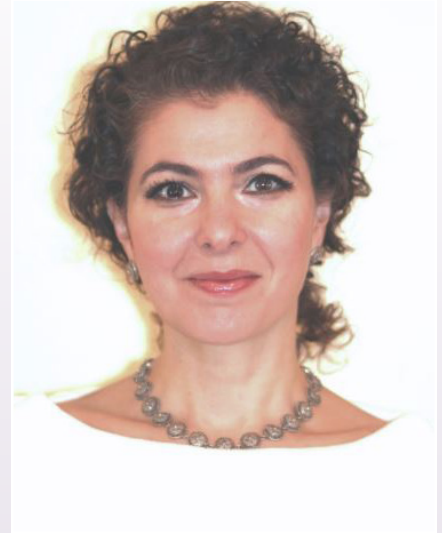
THE POWERFUL WOMEN OF NEW JERSEY



Khalifah Shabazz, Esq.
Attorney NAN



Hira Shaikh
Senior Vice President,
Client Management,
Moxie Strategies



Rana Shanawani
Executive Director,
Women's Center for
Entrepreneurship



Marsha Shapiro
Marriage Equality
Activist, STAND Central
NJ



Michele Siekerka, Esq.
President & CEO, NJBIA



Maisha Simmons
Asst. Vice President for
Equity & Social Justice,
Robert Wood Johnson
Foundation

THE POWERFUL WOMEN OF NEW JERSEY



Marisa Slaten
Director of Regulatory
Initiatives, Clean Energy



Monica Slater-Stokes
Corporate and
Government Affairs,
United Airlines



**Dr. Tonya Smith-
Jackson**
Chancellor, Rutgers
University-Newark



Christine Ann Soto, Esq.
General Counsel, Essex
County College



Christine Stearns
Chief Government
Relations Officer, NJ
Hospital Association



Kelly Stewart Maer
Director of Public Affairs
and Advocacy, Capital
Health Systems

THE POWERFUL WOMEN OF NEW JERSEY



Sheea Sybblis, Esq.

Vice President, Human
Pharma Business Law,
Boehringer Ingelheim
Pharmaceuticals, Inc



Lisa Takeuchi-Cullen

President, Writers Guild
of America East



Jennifer Taylor

Director of Member
Development, NJ General
Assembly



Diane Testa

Chief Partner/Borough
Administrator Clerk
for Borough of Fairview
Testa, & DeCarlo Law
Firm



Amy Torres

Executive Director, NJ
Alliance for Immigrant
Justice



Terry Tucker

Chief of Staff, HMFA

THE POWERFUL WOMEN OF NEW JERSEY



Catherine Tung

Government Affairs
Director, McCarter &
English LLP



Jennifer Velez

Executive Vice President,
Health & Network
Solutions, Horizon
BlueCross Blue Shield
of NJ



Charlene Vickers

Director, Responsible
Sourcing, Johnson &
Johnson



**MarieKarl Vilceus-
Talty, MA, BSN**

President & CEO,
Partnership for Maternal
& Child Health of
Northern NJ



Deborah Visconi

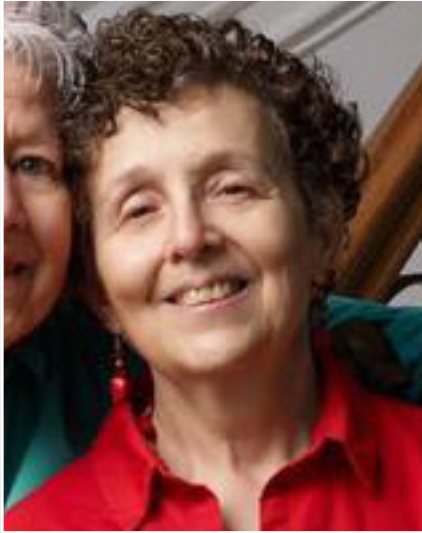
President and Chief
Executive Officer,
Bergen New Bridge
Medical Center



Mary Wachter

Executive Director,
State & Local Affairs,
Genetech, A Member
of the Roche Group

THE POWERFUL WOMEN OF NEW JERSEY



Louise Walpin

Marriage Equality
Activist, STAND Central
NJ



Debbie Walsh

Director, Center for
American Women and
Politics



Robin A. Walton

Sr. VP of External Affairs
& Chief Philanthropy
Officer, Inspira Health



Shari Weiner

Partner, Murphy McKeon
P.C.



Regina Wilder

NJ Assembly Majority
Office



Melanie Willoughby

Executive Director, NJ
Business Action Center

THE POWERFUL WOMEN OF NEW JERSEY



Kaitlyn Wojtowicz

Vice President of Public Affairs, Planned Parenthood Action Fund of NJ



Storm Wyche

Executive Director, HCDO



Talia Young

CEO, Newark Symphony Hall



Constance Zappella

NJ First Female Deputy Fire Chief, Jersey City Fire Department



Trish Zita

Zita Group



Christina Zuk

President, CZ Strategies

In Remembrance of



*Kabir Moss,
a kindhearted and talented soul committed to
working alongside and uplifting Democratic leaders
throughout New Jersey. His spirit, dedication,
and generosity will not be forgotten.*